

# AccuPad Inc.

SILICONE • PRINT PADS • ROLL COVERINGS

## Product Catalog 2026

- About AccuPad's Print Pads
- Round Print Pad
- Cone Shaped Print Pads
- Square / Rectangular Print Pads
- Roof Top Shaped Pads
- Elongated Print Pads
- Print Blankets
- Rotary Print Pads / Rollers
- Custom and Unique Shaped Print Pads



## About AccuPad and Print Pads

### ***Why Print Pads form AccuPad?***

AccuPad designs and manufactures Silicone Print Pads to meet the highest print quality requirements since its foundation in 1991.

Our customer base includes many of the largest companies in the US and throughout the world. With a large inventory of standard shapes available, AccuPad can ship orders within 24h. Custom designed pads are typically shipped within a week.

### ***Our Goal***

Consistently manufacture and deliver the highest quality Print Pad that will exceed the customers print job requirements.

We take an individual approach to solve our customers printing problems.

### ***Common Features***

All pads and parts are available  
Durometer "A" scale and "00" scale  
On metal, wood or custom molded bases  
Multiple colors



### ***To Order***

Email Us: [sales@accupad.com](mailto:sales@accupad.com)  
Call our Sales Department 864 964 0900  
Fax your inquiry or order: 864 964 0206



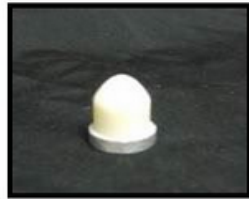
## Round Print Pads



Round1  
DP: 0.42, DB: 0.45  
H: 0.46



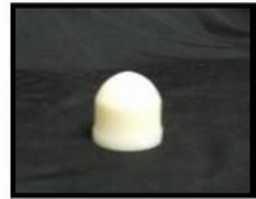
Round4  
DP: 0.60, DB: 0.68  
H: 0.79



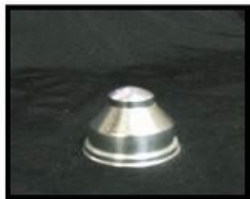
Round5  
DP: .059, DB: 0.61  
H: 0.76



Round6  
DP: 0.77, DB: 0.80  
H: 0.88



Round7  
DP: 0.88, DB: 0.91  
H: 1.05



Round8  
DP: 0.55, DB: 1.09  
H: 0.86



Round9  
DP: 0.56, DB: 1.09  
H: 0.86



Round10  
DB: 1.18  
H: 1.02



Round11  
DP: 0.93, DB: 1.03  
H: 1.22



Round12  
DP: 0.96, DB: 1.03  
H: 1.26



Round13  
DB: 1.06  
H: 0.86



Round14  
DP: 1.12, DB: 1.12  
H: 1.14



Round15  
DP: 1.11, DB: 1.24  
H: 1.37



Round16  
DP: 1.12, DB: 1.18  
H: 1.26



Round17  
DP: 1.50, DB: 1.55  
H: 1.06



Round18  
DP: 1.50, DB: 1.58  
H: 1.34



Round19  
DP: 1.40, DB: 1.62  
H: 1.64



Round20  
DB: 1.83  
H: 1.82



Round21  
DP: 1.56, DB: 1.66  
H: 1.38



Round22  
DP: 1.52, DB: 1.74  
H: 1.50

All measurements are approximate and measured in inches (") without base  
W, L, D, H stands for Width, Length, Diameter and Height. The suffix P and B indicate measurement on Print level and Base level. Example: WB is width on Base; WP is max width on Print surface  
Print area depending on shape and other pad properties.  
Print surface is not necessarily the usable print area.



## Round Print Pads – continued -



Round23  
DP: 1.61, DB: 1.67  
J: 1.59



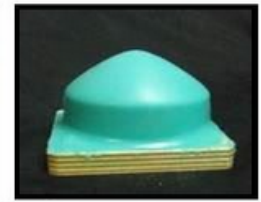
Round24  
DP: 1.59, DB: 1.59  
H: 1.45



Round25  
DP: 1.54, DB: 1.60  
H: 1.35



Round26  
DP: 2.13, DB: 2.25  
H: 2.01



Round27  
DP: 2.08, DB: 2.16  
H: 1.42



Round28  
DP: 2.13, DB: 2.19  
H: 1.87



Round29  
DP: 2.09, DB: 2.22  
H: 1.81



Round30  
DP: 2.13, DB: 2.26  
H: 2.01



Round31  
DP: 2.14, DB: 2.21  
H: 1.82



Round32  
DP: 2.14, DB: 2.30  
H: 1.77



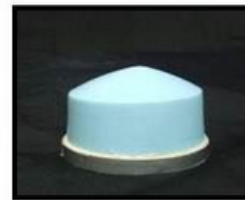
Round33  
DP: 2.19, DB: 2.20  
H: 2.16



Round34  
DP: 1.97, DB: 2.07  
H: 1.83



Round35  
DP: 1.98, DB: 2.22  
H: 1.85



Round36  
DP: 2.49, DB: 2.62  
H: 1.67



Round37  
DP: 1.90, DB: 2.26  
H: 2.00



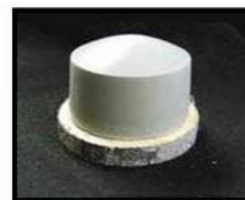
Round38  
LP: 2.18, WP: 1.41  
DB: 2.43  
H: 2.17



Round39  
DP: 2.89, DB: 3.02  
H: 1.82



Round40  
DP: 2.87, DB: 3.01  
H: 2.37



Round41  
DP: 2.51, DB: 2.68  
H: 2.26



Round42  
DP: 3.05, DB: 3.23  
H: 1.74

All measurements are approximate and measured in inches (") without base  
W, L, D, H stands for Width, Length, Diameter and Height. The suffix P and B indicate measurement on Print level and Base level. Example: WB is width on Base; WP is max width on Print surface  
Print area depending on shape and other pad properties.  
Print surface is not necessarily the usable print area.



## Round Print Pads – continued -



Round43  
DP: 2.91, DB: 2.96  
H: 2.81



Round44  
DP: 3.22, DB: 3.45  
H: 2.14



Round45  
DP: 3.20, DB: 3.39  
H: 2.27



Round46  
DP: 3.13, DB: 3.61  
H: 1.69



Round47  
DP: 3.23, DB: 3.45  
H: 1.87



Round48  
DP: 3.30, DB: 3.52  
H: 2.29



Round49  
DP: 3.22, DB: 3.37  
H: 2.63



Round50  
DP: 2.78, DB: 2.87  
H: 2.47



Round51  
DP: 4.02, DB: 4.05  
H: 3.04



Round52  
DP: 3.22, DB: 3.44  
H: 2.69



Round53  
DP: 3.25, DB: 3.48  
H: 3.23



Round54  
DP: 3.77, DB: 3.84  
H: 1.45



Round55  
DP: 3.78, DB: 3.89  
H: 2.33



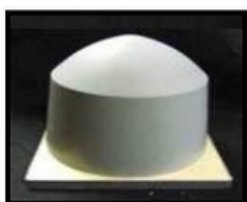
Round56  
DP: 4.68, 4.90  
H: 2.55



Round57  
DP: 4.80, DB: 5.03  
H: 2.73



Round58  
DP: 4.47, DB: 4.77  
H: 3.46



Round 59  
DP: 4.69, DB: 5.32  
H: 4.48



Round60  
DP: 5.60, DB: 5.88  
H: 3.61



Round61  
DP: 6.05, DB: 6.20  
H: 2.73



Round62  
DP: 5.38, DB: 5.42  
H: 2.36

All measurements are approximate and measured in inches (") without base  
W, L, D, H stands for Width, Length, Diameter and Height. The suffix P and B indicate measurement  
on Print level and Base level. Example: WB is width on Base; WP is max width on Print surface  
Print area depending on shape and other pad properties.  
Print surface is not necessarily the usable print area.



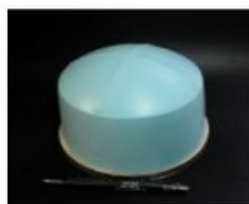
## Round Print Pads – continued -



Round 63  
DB: 7.48  
H: 2.67



Round64  
DP: 6.84, DB: 7.55  
H: 5.26



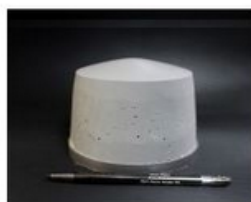
Round65  
DP: 5.36, DB: 5.88  
H: 4.36



Round66  
DP: 5.09, DB: 5.53  
H: 4.41



Round67  
DP: 4.49, DB: 4.86  
H: 3.98



Round68  
DP: 3.96, DB: 4.61  
H: 3.74



Round69  
DP: 5.07, DB: 5.25  
H: 3.56



Round70  
DP: 4.26, DB: 4.53  
H: 3.26



Round71  
DP: 4.94, DB: 5.38  
H: 2.92



Round72  
DP: 4.91, DB: 4.94  
H: 3.07



Round73  
DP: 4.24, DB: 4.47  
H: 2.62



Round74  
DP: 3.63, DB: 3.74  
H: 2.49



Round75  
DP: 3.38, DB: 3.56  
H: 2.38



Round76  
DP: 3.23, DB: 3.39  
H: 1.65



Round77  
DP: 3.25, DB: 3.34  
H: 1.51



Round78  
DP: 2.59, DB: 3.07  
H: 2.16



Round79  
DP: 2.76, DB: 2.82  
H: 1.82



Round80  
DP: 1.71, DB: 2.50  
H: 1.87



Round81  
DP: 2.29, DB: 2.52  
H: 1.92

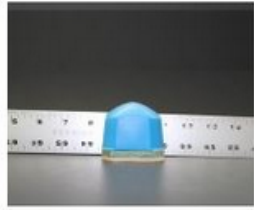


Round82  
DP: 2.25, DB: 2.40  
H: 1.93

All measurements are approximate and measured in inches (") without base  
W, L, D, H stands for Width, Length, Diameter and Height. The suffix P and B indicate measurement on Print level and Base level. Example: WB is width on Base; WP is max width on Print surface  
Print area depending on shape and other pad properties.  
Print surface is not necessarily the usable print area.



## Round Print Pads – continued -



Round83  
DP: 1.97, DB: 2.25  
H: 1.99



Round84  
DP: 1.85, DB: 2.20  
H: 1.68



Round85  
DP: DB: 2.29  
H: 1.75



Round86  
DP: 1.72, DB: 1.95  
H: 1.85



Round87  
DP: 1.49, DB: 1.78  
H: 1.87



Round88  
DP: 1.39, DB: 1.58  
H: 1.55



Round89  
DP: 1.37, DB: 1.58  
H: 1.55



Round90  
DP: 1.78, DB: 1.86  
H: 1.41



Round91  
DP: 1.53, DB: 1.67  
H: 1.32



Round92  
DP: 1.70, DB: 1.87  
H: 1.25



Round93  
DP: 1.81, DB: 1.84  
H: 1.41



Round94  
DP: 1.10, DB: 1.20  
H: 1.02



Round95  
DP: DB: 1.00  
H: 1.00



Round96  
DP: 0.53, DB: 0.80  
H: 0.54



Round 97  
OD: 2.39  
H: 2.10



Round 98  
OD: 2.34  
H: 1.97



Round 99  
OD: 2.39  
H: 2.10



Round 100  
OD: 1.86  
H: 1.76



Round 101  
OD: 1.86  
H: 1.81



Round 102  
OD: 3.36  
H: 2.37

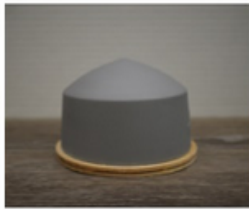
All measurements are approximate and measured in inches (") without base  
W, L, D, H stands for Width, Length, Diameter and Height. The suffix P and B indicate measurement on Print level and Base level. Example: WB is width on Base; WP is max width on Print surface  
Print area depending on shape and other pad properties.  
Print surface is not necessarily the usable print area.



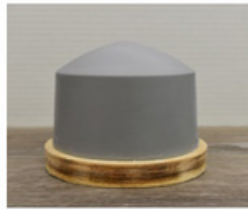
## Round Print Pads – continued -



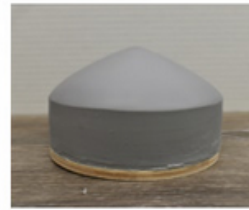
Round103  
OD: 2.91  
H: 2.18



Round 104  
OD: 3.52  
H: 2.79



Round 105  
OD: 3.49  
H: 3.23



Round 106  
OD: 4.48  
H: 2.85



Round 107  
OD: 0.52  
H: 0.50



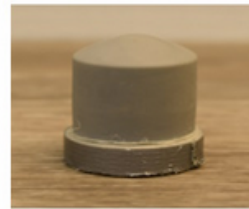
Round 108  
OD: 0.46  
H: 0.46



Round 109  
OD: 0.68  
H: 0.96



Round 110  
OD: 0.72  
H: 0.81



Round 111  
OD: 1.12  
H: 1.05



Round 112  
OD: 2.86  
H: 2.51



Round 118  
OD: 1.54  
H: 1.24



Round 114  
OD: 3.65  
H: 2.76



Round 115  
OD: 2.95  
H: 2.20



Round 116  
OD: 2.24  
H: 2.42



Round 117  
OD: 6.00  
H: 3.75



Round 118  
OD: 5.18  
H: 1.9



Round119  
OD: 3.53  
H: 2.24



R120  
OD: 4.20  
H: 1.90



Round121  
OD: 2.08  
H: 1.52



Round 122  
OD: 4.87  
H: 1.95

All measurements are approximate and measured in inches (") without base  
W, L, D, H stands for Width, Length, Diameter and Height. The suffix P and B indicate measurement on Print level and Base level. Example: WB is width on Base; WP is max width on Print surface  
Print area depending on shape and other pad properties.  
Print surface is not necessarily the usable print area.



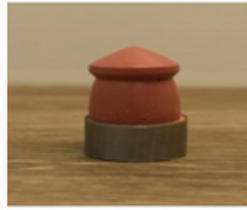
## Round Print Pads – continued -



Round 123  
OD: 2.21  
H: 1.74



Round 124  
OD: 0.99  
H: 1.39



Round 125  
OD: 1.05  
H: 1.21



Round 126  
OD: 6.00  
H: 3.18



Round 127  
OD: 2.84  
H: 1.66



Round 128  
OD: 2.30  
H: 1.28

All measurements are approximate and measured in inches (") without base  
W, L, D, H stands for Width, Length, Diameter and Height. The suffix P and B indicate measurement on Print level and Base level. Example: WB is width on Base; WP is max width on Print surface  
Print area depending on shape and other pad properties.  
Print surface is not necessarily the usable print area.



## Cone Shaped Print Pads



Cone1:  
OD: 0.85  
H: 0.54



Cone2  
OD: 1.06  
H: 0.83



Cone3  
OD: 1.06  
H: 0.86



Cone4  
OD: 1.14  
H: 1.01



Cone5  
OD: 1.14  
H: 0.97



Cone6  
OD: 1.64  
H: 1.42



Cone7  
OD: 2.12  
H: 1.69



Cone8  
OD: 1.98  
H: 1.97



Cone9  
OD: 2.04  
H: 2.06



Cone10  
OD: 2.30  
H: 2.39



Cone11  
OD: 2.32  
H: 2.27



Cone12  
OD: 2.36  
H: 2.24



Cone13  
OD: 2.97  
H: 2.10



Cone14  
OD: 3.11  
H: 2.38



Cone15  
OD: 3.14  
H: 2.44



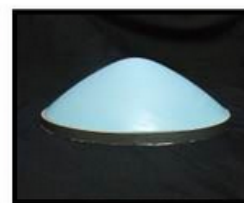
Cone16  
OD: 3.23  
H: 2.95



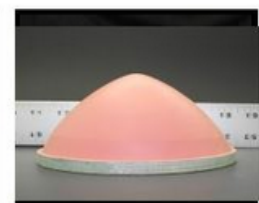
Cone17  
OD: 3.43  
H: 2.91



Cone18  
OD: 3.73  
H: 2.17



Cone19  
OD: 7.48  
H: 2.67

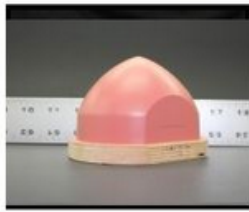


Cone20  
OD: 5.28  
H: 2.72

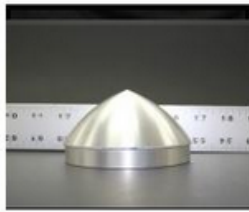
All measurements are approximate and measured in inches (") without base  
W, L, D, H stands for Width, Length, Diameter and Height. The suffix P and B indicate measurement on Print level and Base level. Example: WB is width on Base; WP is max width on Print surface  
Print area depending on shape and other pad properties.  
Print surface is not necessarily the usable print area.



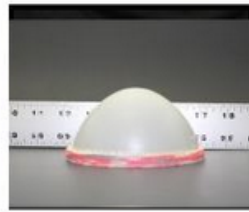
## Cone Shaped Print Pads – continued -



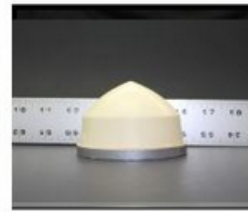
Cone21  
OD: 3.75, W: 3.19  
H: 3.01



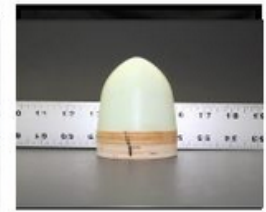
Cone22  
OD: 3.89  
H: 2.13



Cone23  
OD: 3.79  
H: 2.19



C24  
ODB: 3.25, ODP: 3.07  
H: 2.46



Cone25  
OD: 2.59  
H: 2.81



Cone26  
OD: 3.20  
H: 1.53



Cone27  
OD: 2.72  
H: 1.86



Cone28  
OD: 2.33  
H: 2.00



Cone29  
OD: 1.70  
H: 1.44



Cone30  
OD: 2.30  
H: 1.75



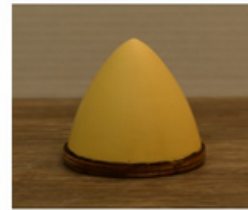
Cone31  
OD: 3.32  
H: 4.00



Cone32  
OD: 3.56  
H: 2.26



Cone33  
OD: 3.84  
H: 3.04



Cone34  
OD: 2.30  
H: 2.36



Cone35  
OD: 1.74  
H: 1.76



Cone36  
OD: 2.15  
H: 1.80

All measurements are approximate and measured in inches (") without base  
W, L, D, H stands for Width, Length, Diameter and Height. The suffix P and B indicate measurement on Print level and Base level. Example: WB is width on Base; WP is max width on Print surface  
Print area depending on shape and other pad properties.  
Print surface is not necessarily the usable print area.



## Square and Rectangular Print Pads



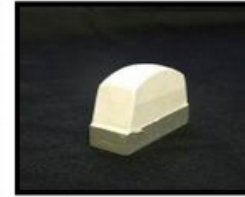
SR1  
LP: 0.76 LB: 0.79  
WP: 0.38 WB: 0.38  
H: 0.64



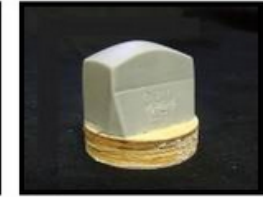
SR2  
LP: 0.74 LB: 0.79  
WP: 0.58 WB: 0.61  
H: 0.65



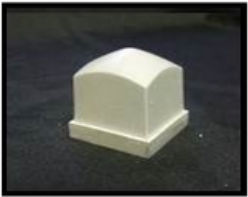
SR3  
LP: 0.86 LB: 0.91  
WP: 0.55 WB: 0.58  
H: 0.80



SR4  
LP: 1.02 LB: 1.22  
WP: 0.45 WB: 0.48  
H: 0.69



SR5  
LP: 1.16 LB: 1.27  
WP: 0.62 WB: .91  
H: 1.20



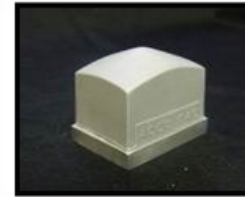
SR6  
LP: 1.06 LB: 1.12  
WP: 1.06 WB: 1.12  
H: 1.21



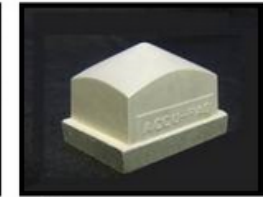
SR7  
LP: 1.13 LB: 1.15  
WP: 1.13 WB: 1.15  
H: 1.15



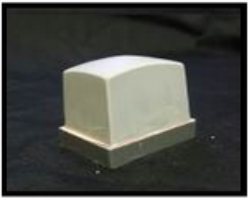
SR8  
LP: 1.11 LB: 1.13  
WP: 1.11 WB: 1.13  
H: 1.22



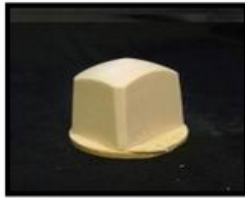
SR9  
LP: 1.39 LB: 1.48  
WP: 1.02 WB: 1.10  
H: 1.32



SR10  
LP: 1.39 LB: 1.47  
WP: 1.08 WB: 1.15  
H: 1.18



SR11  
LP: 1.46 LB: 1.59  
WP: 1.06 WB: 1.21  
H: 1.26



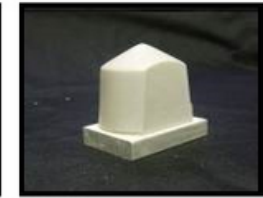
SR12  
LP: 1.35 LB: 1.50  
WP: 1.05 WB: 1.22  
H: 1.44



SR13  
LP: 1.49 LB: 1.60  
WP: 0.91 WB: 1.35  
H: 1.41



SR14  
LP: 1.70 LB: 1.80  
WP: 0.99 WB: 1.50  
H: 1.46



SR15  
LP: 1.36 LB: 1.56  
WP: 1.04 WB: 1.07  
H: 1.67



SR16  
LP: 1.96 LB: 2.01  
WP: 0.69 WB: .073  
H: 1.28



SR17  
LP: 1.38 LB: 1.60  
WP: 0.64 WB: 0.89  
H: 1.20



SR18  
LP: 1.85 LB: 1.95  
WP: 0.58 WB: 0.69  
H: 1.23



SR19  
LP: 1.56 LB: 1.81  
WP: 0.98 WB: 1.25  
H: 0.92



SR20  
LP: 1.52 LB: 1.58  
WP: 1.52 WB: 1.58  
H: 1.67

All measurements are approximate and measured in inches (") without base  
W, L, D, H stands for Width, Length, Diameter and Height. The suffix P and B indicate measurement  
on Print level and Base level. Example: WB is width on Base; WP is max width on Print surface  
Print area depending on shape and other pad properties.  
Print surface is not necessarily the usable print area.

Copyright ©2020 - 2026 - ACCUPAD INC.

1324 Harris Bridge Road, Anderson SC29621 USA

Phone: 864 964 0900, Fax: 864 964 0206

Email: sales@accupad.com

AccuPad Inc.

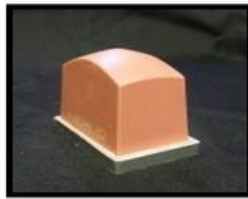


Web: <https://accupad.com>

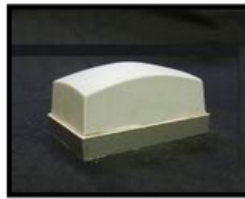
## Square and Rectangular Print Pads – continued -



SR21  
LP: 1.80 LB: 1.87  
WP: 1.64 WB: 1.71  
H: 1.83



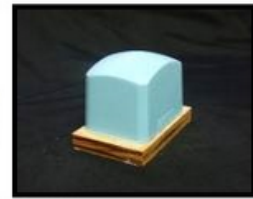
SR22  
LP: 1.95 LB: 2.11  
WP: 1.09 WB: 1.25  
H: 1.65



SR24  
LP: 2.39 LB: 2.55  
WP: 1.43 WB: 1.57  
H: 1.20



SR25  
LP: 2.07 LB: 2.16  
WP: 1.48 WB: 1.53  
H: 1.88



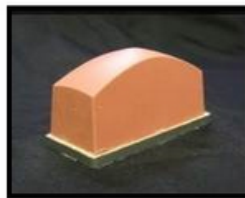
SR26  
LP: 1.99 LB: 2.21  
WP: 1.41 WB: 1.60  
H: 2.02



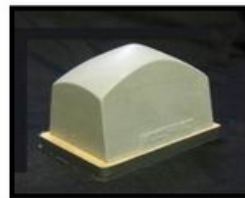
SR27  
LP: 2.69 LB: 2.73  
WP: 1.40 WB: 1.53  
H: 1.64



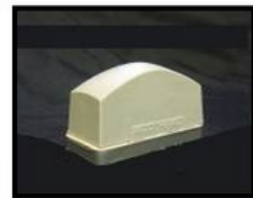
SR28  
LP: 2.58 LB: 2.65  
WP: 1.49 WB: 1.60  
H: 1.66



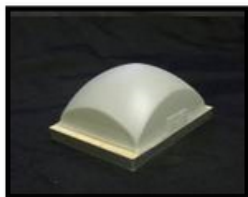
SR29  
LP: 2.71 LB: 2.87  
WP: 1.06 WB: 1.23  
H: 1.77



SR30  
LP: 2.72 LB: 2.89  
WP: 1.52 WB: 1.91  
H: 1.88



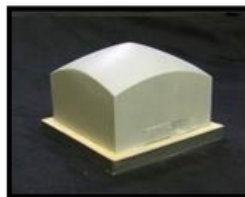
SR31  
LP: 2.66 LB: 2.86  
WP: 1.87 WB: 1.25  
H: 1.82



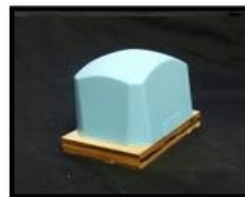
SR32  
LP: 2.61 LB: 2.89  
WP: 2.01 WB: 2.25  
H: 1.54



SR33  
LP: 2.03 LB: 2.52  
WP: 1.97 WB: 2.48  
H: 2.43



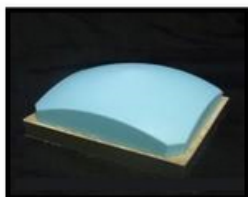
SR34  
LP: 2.42 LB: 2.53  
WP: 2.44 WB: 2.54  
H: 2.17



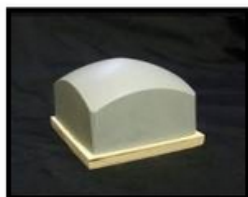
SR35  
LP: 2.38 LB: 2.70  
WP: 1.77 WB: 2.05  
H: 2.23



SR36  
LP: 2.20 LB: 1.85  
WP: 1.51 WB: 2.30  
H: 2.45



SR37  
LP: 3.27 LB: 3.32  
WP: 2.92 WB: 2.96  
H: 1.12



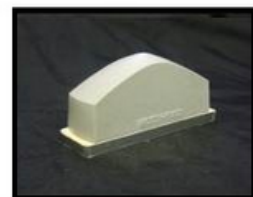
SR38  
LP: 2.78 LB: 2.86  
WP: 2.83 WB: 2.89  
H: 2.28



SR39  
LP: 2.98 LB: 3.11  
WP: 2.07 WB: 2.28  
H: 1.96



SR40  
LP: 3.07 LB: 3.35  
WP: 2.06 WB: 2.42  
H: 2.25



SR41  
LP: 3.67 LB: 3.85  
WP: 1.16 WB: 1.27  
H: 2.15

All measurements are approximate and measured in inches (") without base  
W, L, D, H stands for Width, Length, Diameter and Height. The suffix P and B indicate measurement on Print level and Base level. Example: WB is width on Base; WP is max width on Print surface  
Print area depending on shape and other pad properties.  
Print surface is not necessarily the usable print area.



## Square and Rectangular Print Pads – continued -



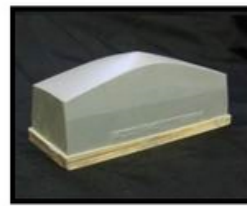
SR42  
LP: 3.28 LB: 4.05  
WP: 1.48 WB: 1.66  
H: 2.04



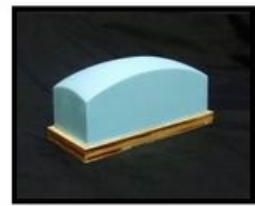
SR43  
LP: 3.92 LB: 4.17  
WP: 2.78 WB: 3.04  
H: 2.28



SR44  
LP: 4.31 LB: 4.77  
WP: 2.60 WB: 3.10  
H: 2.52



SR45  
LP: 5.00 LB: 5.12  
WP: 1.71 WB: 2.03  
H: 2.28



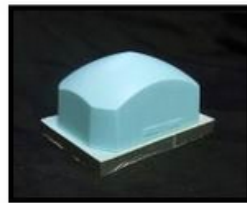
SR46  
LP: 4.54 LB: 4.72  
WP: 1.85 WB: 2.00  
H: 2.36



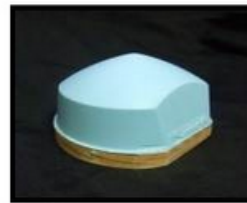
SR47  
LP: 3.69 LB: 3.90  
WP: 2.47 WB: 2.69  
H: 2.28



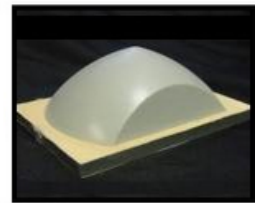
SR48  
LP: 3.91 LB: 4.11  
WP: 2.49 WB: 2.80  
H: 2.54



SR49  
LP: 3.33 LB: 3.60  
WP: 2.45 WB: 2.70  
H: 2.33



SR50  
LP: 3.85 LB: 3.99  
WP: 3.00 WB: 3.55  
H: 2.18



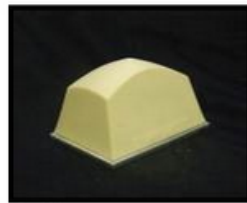
SR51  
LP: 4.42 LB: 4.42  
WP: 2.68 WB: 2.97  
H: 1.82



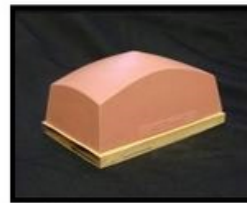
SR52  
LP: 4.89 LB: 4.99  
WP: 3.30 WB: 3.94  
H: 2.72



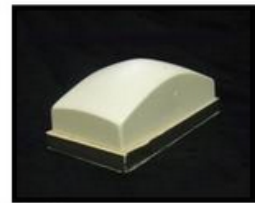
SR53  
LP: 5.31 LB: 5.31  
WP: 2.64 WB: 3.42  
H: 3.07



SR54  
LP: 3.65 LB: 4.46  
WP: 1.97 WB: 3.08  
H: 3.00



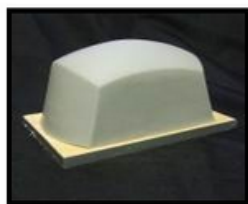
SR55  
LP: 4.27 LB: 4.80  
WP: 2.57 WB: 3.09  
H: 2.55



SR56  
LP: 4.98 LB: 5.10  
WP: 2.43 WB: 2.60  
H: 2.10



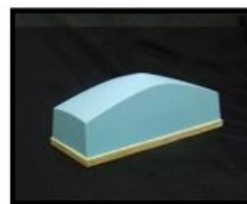
SR57  
LP: 4.87 LB: 5.18  
WP: 2.46 WB: 3.03  
H: 1.83



SR58  
LP: 4.37 LB: 5.36  
WP: 3.02 WB: 3.28  
H: 2.91



SR59  
LP: 7.07 LB: 7.35  
WP: 2.97 WB: 3.35  
H: 2.63



SR60  
LP: 6.93 LB: 7.29  
WP: 2.50 WB: 2.83  
H: 2.96



SR61  
LP: 7.61 LB: 7.94  
WP: 1.81 WB: 2.07  
H: 2.94

All measurements are approximate and measured in inches (") without base  
W, L, D, H stands for Width, Length, Diameter and Height. The suffix P and B indicate measurement on Print level and Base level. Example: WB is width on Base; WP is max width on Print surface  
Print area depending on shape and other pad properties.  
Print surface is not necessarily the usable print area.

Copyright ©2020 - 2026 - ACCUPAD INC.

1324 Harris Bridge Road, Anderson SC29621 USA

Phone: 864 964 0900, Fax: 864 964 0206

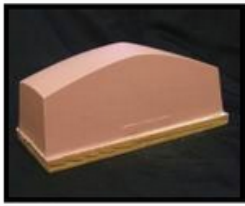
Email: sales@accupad.com

AccuPad Inc.

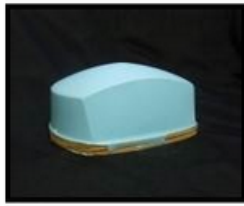


Web: <https://accupad.com>

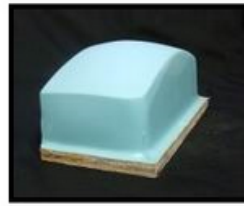
## Square and Rectangular Print Pads – continued -



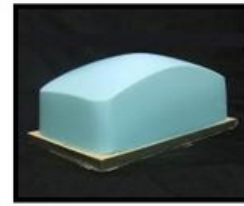
SR62  
LP: 6.90 LB: 7.36  
WP: 2.46 WB: 2.96  
H: 3.63



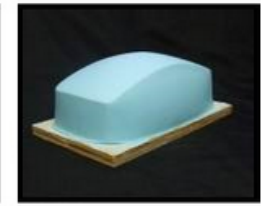
SR63  
LP: 5.79 LB: 6.09  
WP: 3.54 WB: 4.59  
H: 2.94



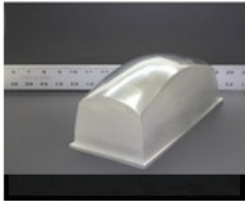
SR64  
LP: 7.04 LB: 7.43  
WP: 3.28 WB: 3.36  
H: 3.42



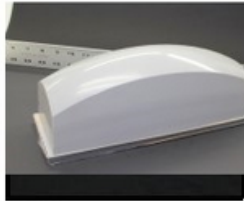
SR65  
LP: 7.16 LB: 7.49  
WP: 3.91 WB: 4.30  
H: 3.47



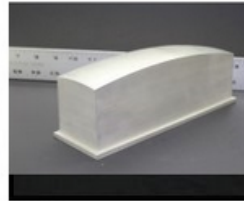
SR66  
LP: 7.05 LB: 7.41  
WP: 3.25 WB: 4.40  
H: 3.22



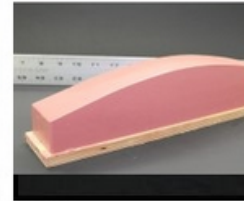
SR67  
LP: 7.69 LB: 8.62  
WP: 3.20 WB: 3.98  
H: 4.19



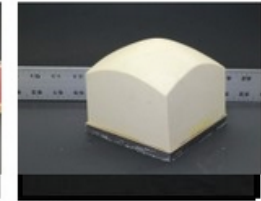
SR68  
LP: 9.56 LB: 10.06  
WP: 3.55 WB: 3.85  
H: 4.34



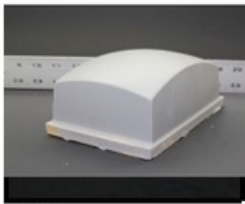
SR69  
LP: 7.48 LB: 7.67  
WP: 2.05 WB: 2.21  
H: 3.15



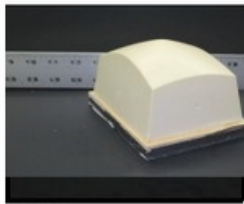
SR70  
LP: 11.81 LB: 11.99  
WP: 2.00 WB: 2.17  
H: 2.97



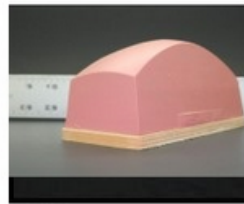
SR71  
LP: 3.98 LB: 4.03  
WP: 3.68 WB: 4.03  
H: 4.01



SR72  
LP: 5.82 LB: 6.07  
WP: 3.86 WB: 4.14  
H: 2.79



SR73  
LP: 4.46 LB: 5.05  
WP: 2.89 WB: 3.60  
H: 3.00



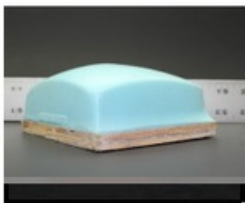
SR74  
LP: 5.39 LB: 5.63  
WP: 2.14 WB: 2.50  
H: 3.03



SR75  
LP: 4.57 LB: 4.72  
WP: 3.17 WB: 3.31  
H: 3.07



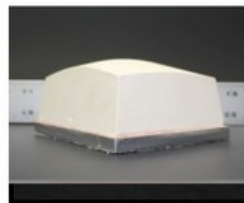
SR76  
LP: 4.45 LB: 4.72  
WP: 2.35 WB: 3.04  
H: 3.06



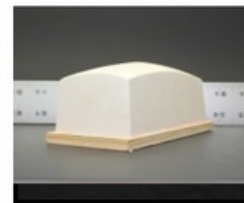
SR77  
LP: 4.62 LB: 4.88  
WP: 3.73 WB: 3.90  
H: 2.10



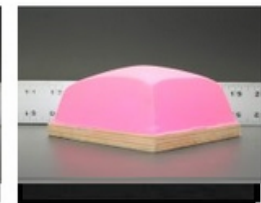
SR78  
LP: 4.43 LB: 4.83  
WP: 2.34 WB: 2.78  
H: 2.60



SR79  
LP: 4.36 LB: 4.80  
WP: 3.13 WB: 3.61  
H: 2.34



SR80  
LP: 4.36 LB: 4.61  
WP: 2.34 WB: 2.51  
H: 2.39



SR81  
LP: 3.67 LB: 4.41  
WP: 2.89 WB: 3.76  
H: 2.13

All measurements are approximate and measured in inches (") without base  
W, L, D, H stands for Width, Length, Diameter and Height. The suffix P and B indicate measurement  
on Print level and Base level. Example: WB is width on Base; WP is max width on Print surface  
Print area depending on shape and other pad properties.  
Print surface is not necessarily the usable print area.

Copyright ©2020 - 2026 - ACCUPAD INC.

1324 Harris Bridge Road, Anderson SC29621 USA

Phone: 864 964 0900, Fax: 864 964 0206

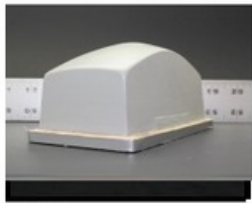
Email: sales@accupad.com

AccuPad Inc.

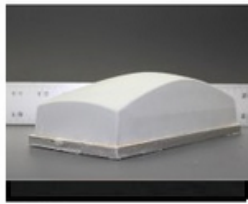


Web: <https://accupad.com>

## Square and Rectangular Print Pads – continued -



SR82  
LP: 4.99 LB: 5.20  
WP: 2.43 WB: 2.71  
H: 3.00



SR83  
LP: 5.73 LB: 6.00  
WP: 2.73 WB: 2.95  
H: 2.06



SR84  
LP: 3.32 LB: 3.53  
WP: 3.32 WB: 3.48  
H: 2.78



SR85  
LP: 3.27 LB: 3.46  
WP: 2.87 WB: 3.09  
H: 2.82



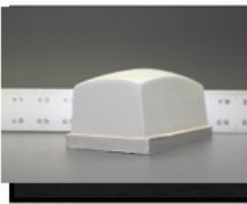
SR86  
LP: 2.41 LB: 2.67  
WP: 2.39 WB: 2.65  
H: 2.51



SR87  
LP: 5.01 LB: 5.07  
WP: 2.44 WB: 2.56  
H: 1.78



SR88  
LP: 3.56 LB: 3.86  
WP: 2.30 WB: 2.62  
H: 2.27



SR89  
LP: 4.23 LB: 4.33  
WP: 2.24 WB: 2.52  
H: 2.33



SR90  
LP: 3.90 LB: 4.10  
WP: 2.76 WB: 2.96  
H: 1.74



SR91  
LP: 4.20 LB: 4.69  
WP: 1.91 WB: 2.48  
H: 1.89



SR92  
LP: 4.24 LB: 4.68  
WP: 2.16 WB: 2.40  
H: 2.00



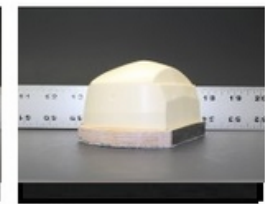
SR93  
LP: 4.86 LB: 4.88  
WP: 3.25 WB: 3.68  
H: 2.02



SR94  
LP: 3.79 LB: 4.01  
WP: 2.32 WB: 2.41  
H: 2.23



SR95  
LP: 3.86 LB: 4.08  
WP: 2.63 WB: 2.94  
H: 2.20



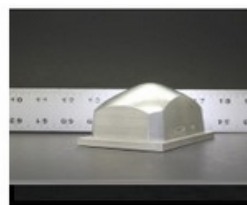
SR96  
LP: 3.68 LB: 3.90  
WP: 1.86 WB: 2.69  
H: 2.43



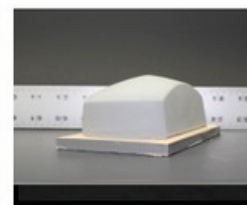
SR97  
LP: 3.87 LB: 3.95  
WP: 2.70 WB: 2.85  
H: 2.02



SR98  
LP: 3.34 LB: 3.53  
WP: 2.43 WB: 2.64  
H: 1.79



SR99  
LP: 3.27 LB: 3.46  
WP: 2.32 WB: 2.55  
H: 2.03



SR100  
LP: 4.30 LB: 4.52  
WP: 2.29 WB: 2.58  
H: 2.05

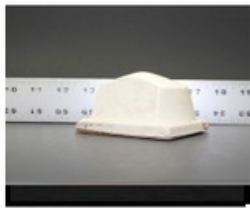


SR101  
LP: 2.16 LB: 3.45  
WP: 1.29 WB: 2.45  
H: 1.89

All measurements are approximate and measured in inches (") without base  
W, L, D, H stands for Width, Length, Diameter and Height. The suffix P and B indicate measurement  
on Print level and Base level. Example: WB is width on Base; WP is max width on Print surface  
Print area depending on shape and other pad properties.  
Print surface is not necessarily the usable print area.



## Square and Rectangular Print Pads – continued -



SR102  
LP: 2.95 LB: 3.39  
WP: 1.36 WB: 2.15  
H: 1.93



SR103  
LP: 2.93 LB: 3.52  
WP: 1.97 WB: 2.31  
H: 1.78



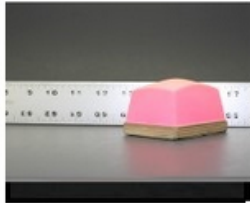
SR104  
LP: 3.09 LB: 3.37  
WP: 2.16 WB: 2.43  
H: 2.03



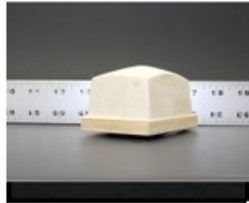
SR105  
LP: 2.39 LB: 2.70  
WP: 1.72 WB: 2.02  
H: 2.28



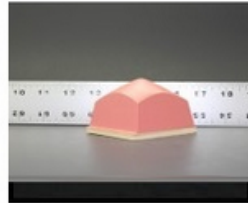
SR106  
LP: 3.39 LB: 3.87  
WP: 1.67 WB: 2.29  
H: 1.97



SR107  
LP: 2.42 LB: 2.75  
WP: 1.77 WB: 2.11  
H: 1.68



SR108  
LP: 2.84 LB: 2.90  
WP: 2.01 WB: 2.24  
H: 2.00



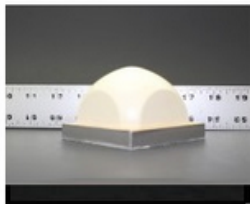
SR109  
LP: 2.05 LB: 2.45  
WP: 2.08 WB: 2.45  
H: 1.92



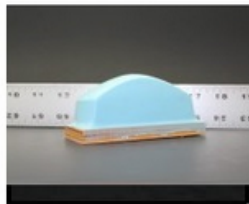
SR110  
LP: 2.44 LB: 2.85  
WP: 2.07 WB: 2.48  
H: 2.47



SR111  
LP: 2.61 LB: 3.07  
WP: 2.72 WB: 2.77  
H: 2.10



SR112  
LP: 2.72 LB: 2.82  
WP: 2.71 WB: 2.83  
H: 2.13



SR113  
LP: 3.77 LB: 4.04  
WP: 1.44 WB: 1.66  
H: 1.92



SR114  
LP: 3.60 LB: 3.79  
WP: 1.03 WB: 1.20  
H: 2.08



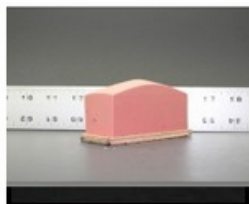
SR115  
LP: 2.41 LB: 3.08  
WP: 1.70 WB: 2.54  
H: 2.52



SR116  
LP: 3.83 LB: 3.94  
WP: 1.48 WB: 1.60  
H: 2.24



SR117  
LP: 3.60 LB: 4.39  
WP: 1.18 WB: 1.94  
H: 1.69



SR118  
LP: 3.13 LB: 3.21  
WP: 1.51 WB: 1.47  
H: 2.06



SR119  
LP: 4.89 LB: 5.20  
WP: 1.61 WB: 1.95  
H: 2.19



SR120  
LP: 2.71 LB: 2.85  
WP: 1.34 WB: 1.84  
H: 1.97



SR121  
LP: 2.68 LB: 3.05  
WP: 1.69 WB: 2.13  
H: 1.72

All measurements are approximate and measured in inches (") without base  
W, L, D, H stands for Width, Length, Diameter and Height. The suffix P and B indicate measurement on Print level and Base level. Example: WB is width on Base; WP is max width on Print surface  
Print area depending on shape and other pad properties.  
Print surface is not necessarily the usable print area.

Copyright ©2020 - 2026 - ACCUPAD INC.

1324 Harris Bridge Road, Anderson SC29621 USA

Phone: 864 964 0900, Fax: 864 964 0206

Email: sales@accupad.com

AccuPad Inc.



Web: <https://accupad.com>

## Square and Rectangular Print Pads – continued -



SR122  
LP: 2.76 LB: 2.85  
WP: 1.43 WB: 1.60  
H: 1.76



SR123  
LP: 1.90 LB: 2.11  
WP: 1.90 WB: 2.12  
H: 1.71



SR124  
LP: 2.50 LB: 2.74  
WP: 1.65 WB: 2.26  
H: 1.63



SR125  
LP: 1.34 LB: 1.44  
WP: 1.13 WB: 1.27  
H: 1.84



SR126  
LP: 1.48 LB: 1.66  
WP: 1.07 WB: 1.28  
H: 1.61



SR127  
LP: 1.90 LB: 2.11  
WP: 1.05 WB: 1.36  
H: 1.47



SR128  
LP: 1.97 LB: 2.12  
WP: 1.09 WB: 1.28  
H: 1.48



SR129  
LP: 1.47 LB: 1.58  
WP: 0.79 WB: 0.91  
H: 1.28



SR130  
LP: 0.84 LB: 1.39  
WP: 0.51 WB: 1.18  
H: 1.29



SR131  
LP: 1.11 LB: 1.50  
WP: 0.72 WB: 1.00  
H: 1.24



SR132  
LP: 1.20 LB: 1.21  
WP: 0.78 WB: 0.89  
H: 1.19



SR133  
LP: 1.38 LB: 1.19  
WP: 1.38 WB: 1.19  
H: 1.16



SR134  
LP: 1.36 LB: 1.45  
WP: 0.98 WB: 1.06  
H: 1.29



SR135  
LP: 1.14 LB: 1.16  
WP: 1.00 WB: 1.04  
H: 1.20



SR136  
LP: 1.09 LB: 1.10  
WP: 0.71 WB: 1.09  
H: 1.18



SR137  
LP: 1.13 LB: 1.17  
WP: 1.10 WB: 1.14  
H: 1.17



SR138  
LP: 1.00 LB: 1.00  
WP: 0.99 WB: 1.00  
H: 1.39



SR139  
LP: 1.10 LB: 1.11  
WP: 1.10 WB: 1.11  
H: 1.22



SR140  
LP: 0.83 LB: 1.13  
WP: 0.51 WB: 1.05  
H: 1.14

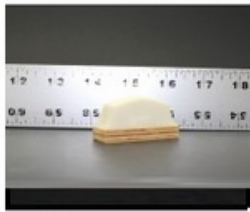


SR141  
LP: 0.62 LB: 1.02  
WP: 0.40 WB: 0.53  
H: 0.81

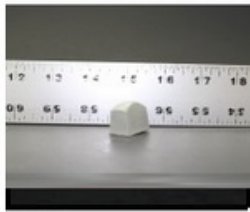
All measurements are approximate and measured in inches (") without base  
W, L, D, H stands for Width, Length, Diameter and Height. The suffix P and B indicate measurement  
on Print level and Base level. Example: WB is width on Base; WP is max width on Print surface  
Print area depending on shape and other pad properties.  
Print surface is not necessarily the usable print area.



## Square and Rectangular Print Pads – continued -



SR142  
LP: 1.44 LB: 1.75  
WP: 0.55 WB: 0.64  
H: .83



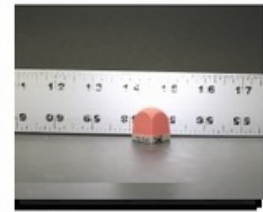
SR143  
LP: 0.88 LB: 0.93  
WP: 0.37 WB: 0.53  
H: 0.88



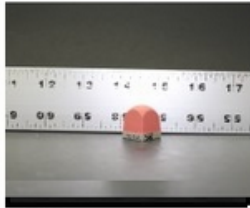
SR143  
LP: 0.74 LB: 0.80  
WP: 0.59 WB: 0.66  
H: 0.74



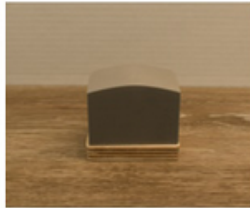
SR145  
LP: 1.12 LB: 1.16  
WP: 0.72 WB: 1.17  
H: 1.24



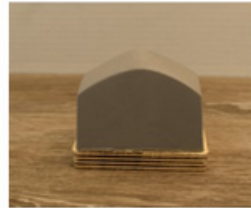
SR146  
LP: 0.61 LB: 0.70  
WP: 0.59 WB: 0.67  
H: 0.78



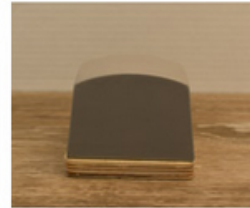
SR146  
LP: 0.61 LB: 0.70  
WP: 0.59 WB: 0.67  
H: 0.78



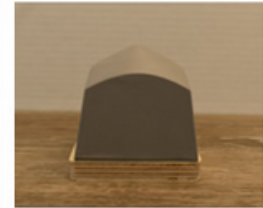
SR 147  
LP: 2.08 LB: 2.17  
WP: 1.47 WB: 1.57  
H: 2.03



SR 148  
LP: 2.75 LB: 2.95  
WP: 1.40WB: 1.99  
H: 2.18



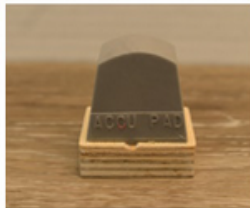
SR 149  
LP: 2.40 LB: 2.87  
WP: 1.58 WB: 2.13  
H: 2.13



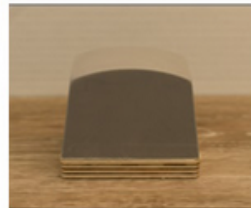
SR 150  
LP: 2.08 LB: 2.55  
WP: 1.95 WB: 2.48  
H: 2.47



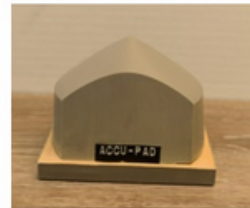
SR 151  
LP: 4.55 LB: 5.82  
WP: 3.32 WB: 4.86  
H: 3.72



SR152  
LP: 1.10 LB: 1.48  
WP: 0.72 WB: 1.00  
H: 1.23



SR 153  
LP: 2.39 LB: 2.89  
WP: 1.55 WB: 2.15  
H: 2.12



SR 154  
LP: 3.69 LB: 3.88  
WP: 1.95 WB: 2.46  
H: 2.33



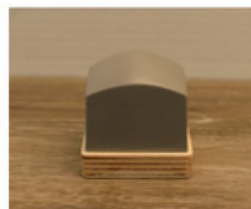
SR 155  
LP: 3.69 LB: 2.88  
WP: 1.95 WB: 2.46  
H: 2.33



SR 156  
LP: 1.04 LB: 1.26  
WP: 0.88 WB: 1.11  
H: 1.36



SR157  
LP: 3.84 LB: 4.07  
WP: 2.83 WB: 2.88  
H: 2.22



SR 158  
LP: 1.50 LB: 1.59  
WP: 1.50 WB: 1.59  
H: 1.65



SR 159  
LP: 0.68 LB: 0.83  
WP: 0.61 WB: 0.70  
H: 1.16



SR 160  
LP: 1.43 LB: 1.51  
WP: 1.05 WB: 1.16  
H: 1.28

All measurements are approximate and measured in inches (") without base  
W, L, D, H stands for Width, Length, Diameter and Height. The suffix P and B indicate measurement on Print level and Base level. Example: WB is width on Base; WP is max width on Print surface  
Print area depending on shape and other pad properties.  
Print surface is not necessarily the usable print area.

Copyright ©2020 - 2026 - ACCUPAD INC.

1324 Harris Bridge Road, Anderson SC29621 USA

Phone: 864 964 0900, Fax: 864 964 0206

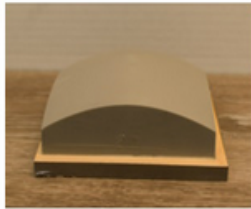
Email: sales@accupad.com

AccuPad Inc.



Web: <https://accupad.com>

## Square and Rectangular Print Pads – continued -



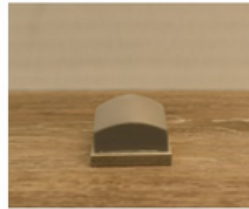
SR 151  
LP: 4.55 LB: 4.65  
WP: 3.15 WB: 3.25  
H: 1.69



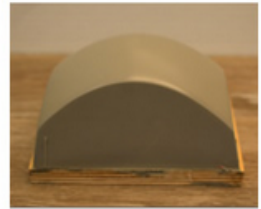
SR 162  
LP: 3.45 LB: 3.79  
WP: 0.96 WB: 1.26  
H: 1.78



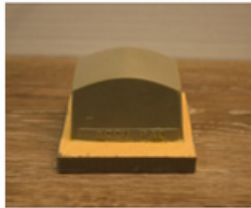
SR 163  
LP: 4.27 LB: 4.55  
WP: 2.23 WB: 2.57  
H: 2.52



SR 164  
LP: 1.51 LB: 1.56  
WP: 1.51 WB: 1.56  
H: 1.11



SR 165  
LP: 4.15 LB: 4.70  
WP: 2.62 WB: 3.39  
H: 2.73



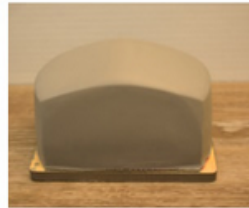
SR 166  
LP: 1.95 LB: 2.14  
WP: 1.44 WB: 1.62  
H: 1.97



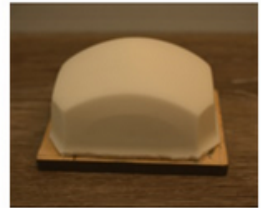
SR 167  
LP: 1.06 LB: 1.08  
WP: 0.55 WB: 0.65  
H: 0.82



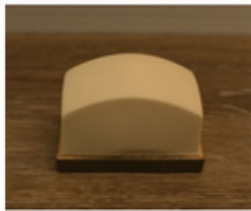
SR 168  
LP: 3.28 LB: 3.43  
WP: 3.28 WB: 3.43  
H: 2.62



SR 169  
LP: 5.45 LB: 5.79  
WP: 2.76 WB: 3.35  
H: 3.28



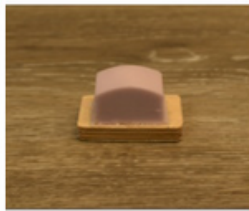
SR 170  
LP: 3.26 LB: 3.64  
LP: 233 LB: 2.75  
H: 2.10



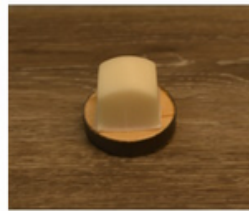
SR 171  
LP: 2.56 LB: 2.66  
WP: 1.43 WB: 1.64  
H: 1.60



SR 172  
LP: 3.36 LB: 3.64  
WP: 1.22 WB: 2.52  
H: 2.00



SR 173  
LP: 1.18 LB: 1.41  
WP: 0.66 WB: 0.84  
H: 0.93



SR 174  
LP: 1.10 LB: 1.29  
WP: 1.10 WB: 1.29  
H: 1.20



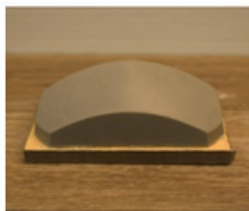
SR 175  
LP: 7.76 LB: 8.00  
WP: 3.00 WB: 3.55  
H: 2.31



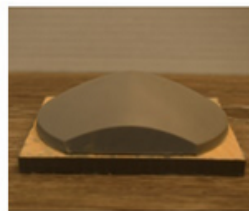
SR 176  
LP: 6.25 LB: 7.00  
WP: 2.15 WB: 2.61  
H: 2.64



SR 177  
LP: 4.48 LB: 5.49  
LP: 4.48 WB: 5.51  
H: 3.89



SR 178  
LP: 3.32 LB: 3.42  
WP: 2.41 WB: 2.57  
H: 1.42



SR 179  
LP: 3.89 LB: 3.93  
WP: 2.94 WB: 3.18  
H: 1.30



SR 180  
LP: 3.31 LB: 4.16  
WP: 3.31 WB: 4.19  
H: 2.24

All measurements are approximate and measured in inches (") without base  
W, L, D, H stands for Width, Length, Diameter and Height. The suffix P and B indicate measurement on Print level and Base level. Example: WB is width on Base; WP is max width on Print surface  
Print area depending on shape and other pad properties.  
Print surface is not necessarily the usable print area.



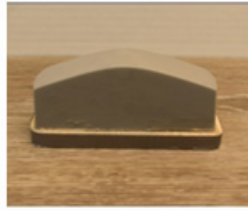
## Square and Rectangular Print Pads – continued -



SR 181  
LP: 8.10 LB: 9.00  
WP: 3.44 WB: 3.97  
H: 3.48



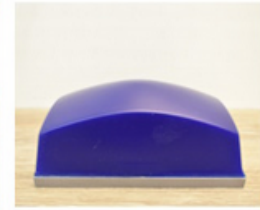
SR 182  
LP: 4.86 LB: 5.12  
WP: 2.76 WB: 3.35  
H: 2.79



SR 183  
LP: 3.61 LB: 3.75  
WP: 1.04 WB: 1.23  
H: 1.56



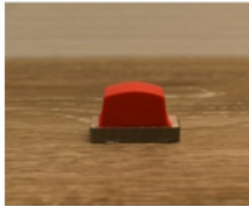
SR 184  
LP: 1.72 LB: 2.16  
WP: 1.77 WB: 2.16  
H: 1.72



SR 185  
LP: 6.00 LB: 6.50  
WP: 3.25 WB: 4.04  
H: 2.75



SR 186  
LP: 4.82 LB: 4.87  
WP: 3.19 WB: 3.91  
H: 2.64



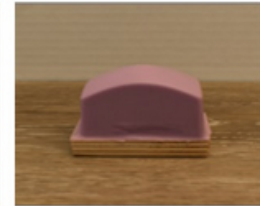
SR 187  
LP: 0.72 LB: 0.89  
WP: 0.36 WB: 0.37  
H: 0.59



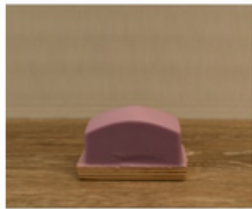
SR 188  
LP: 0.72 LB: 0.89  
WP: 0.47 WB: 0.48  
H: 0.59



SR 189  
LP: 4.80 LB: 4.89  
WP: 3.17 WB: 3.95  
H: 2.58



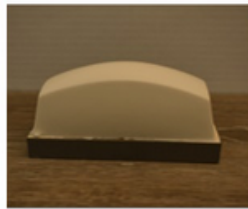
SR190  
LP: 1.94 LB: 2.08  
WP: 0.94 WB: 1.08  
H: 1.32



SR 191  
LP: 0.73 LB: 0.87  
WP: 0.71 WB: 0.82  
H: 0.84



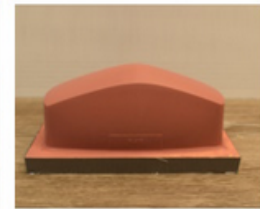
SR 192  
LP: 2.12 LB: 2.39  
WP: 1.05 WB: 1.28  
H: 1.69



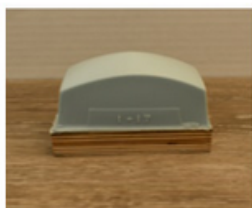
SR193  
LP: 3.71 LB: 4.09  
WP: 1.32 WB: 1.79  
H: 1.72



SR 194  
LP: 8.25 LB: 8.50  
WP: 2.18 WB: 2.73  
H: 2.31



SR 195  
LP: 5.35 LB: 5.67  
WP: 1.79 WB: 2.45  
H: 2.53



SR 196  
LP: 2.49 LB: 2.82  
WP: 1.30 WB: 1.41  
H: 1.51



SR 197  
LP: 4.62 LB: 5.31  
WP: 1.97 WB: 2.27  
H: 2.68



SR 198  
LP: 3.86 LB: 4.36  
WP: 2.64 WB: 3.38  
H: 2.95



SR 199  
LP: 7.00 LB: 7.50  
WP: 2.77 WB: 3.50  
H: 3.75



SR 200  
LP: 7.50 LB: 8.50  
WP: 5.05 WB: 6.25  
H: 4.25

All measurements are approximate and measured in inches (") without base  
W, L, D, H stands for Width, Length, Diameter and Height. The suffix P and B indicate measurement on Print level and Base level. Example: WB is width on Base; WP is max width on Print surface  
Print area depending on shape and other pad properties.  
Print surface is not necessarily the usable print area.

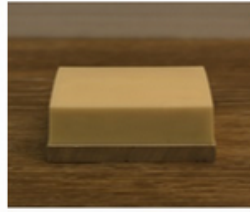
## Square and Rectangular Flat Print Pads



Flat 1  
L: 5.85 W: 4.34  
H: 2.54



Flat:2  
L: 4.24 W: 6.37  
H: 2.05



Flat 3  
L: 2.35 W: 1.67  
H: 0.77



Flat 4  
L: 1.42 W: 1.03  
H: 0.73



Flat 5  
L: 3.52 W: 2.29  
H: 1.12

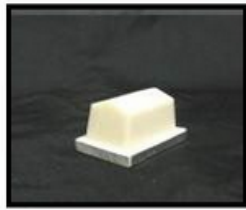
All measurements are approximate and measured in inches (") without base  
W, L, D, H stands for Width, Length, Diameter and Height. The suffix P and B indicate measurement on Print level and Base level. Example: WB is width on Base; WP is max width on Print surface  
Print area depending on shape and other pad properties.  
Print surface is not necessarily the usable print area.



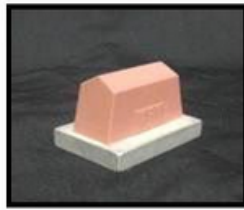
## Roof Top Shaped Print Pads



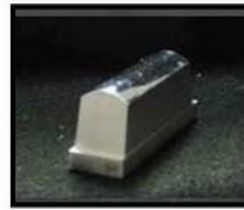
RT1  
LP: 1.26, LB: 1.55  
WP: 0.65, WB: 0.72  
H: 0.92



RT2  
LP: 1.24, LB: 1.44  
WP: 0.77, WB: 0.84  
H: 0.86



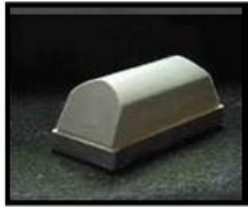
RT3  
LP: 1.19, LB: 1.53  
WP: 0.61, WB: 0.68  
H: 0.95



RT4  
LP: 2.01, LB: 2.32  
WP: 0.64, WB: 0.69  
H: 0.93



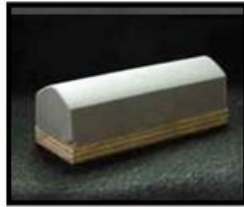
RT5  
LP: 2.51, LB: 2.86  
WP: 0.85, WB: 1.00  
H: 0.92



RT6  
LP: 1.82, LB: 2.65  
WP: 1.01, WB: 1.11  
H: 0.99



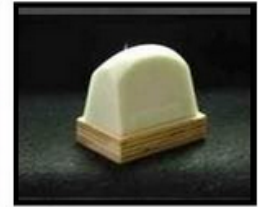
RT8  
LP: 2.91, LB: 3.77  
WP: 1.01, WB: 1.07  
H: 0.98



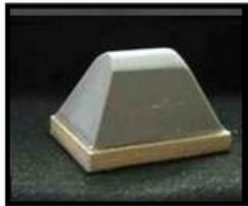
RT9  
LP: 3.27, LB: 3.30  
WP: 1.04, WB: 1.16  
H: 1.05



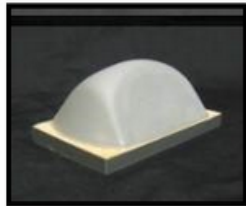
RT10  
LP: 3.44, LB: 3.46  
WP: 1.01, WB: 1.09  
H: 0.98



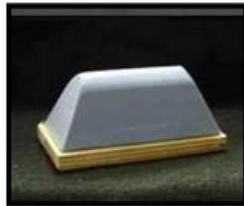
RT11  
LP: 1.73, LB: 1.97  
WP: 0.61, WB: 1.20  
H: 1.71



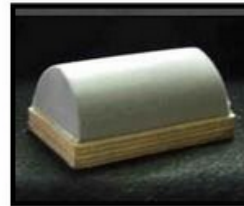
RT12  
LP: 1.17, LB: 2.42  
WP: 0.75, WB: 1.82  
H: 1.52



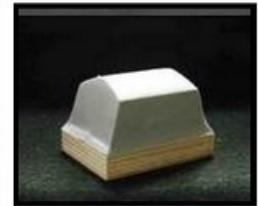
RT13  
LP: 2.45, LB: 3.26  
WP: 0.53, WB: 1.95  
H: 1.34



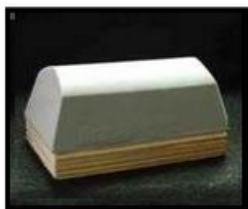
RT14  
LP: 2.18, LB: 3.34  
WP: 0.85, WB: 1.72  
H: 1.53



RT15  
LP: 2.64, LB: 2.87  
WP: 1.71, WB: 1.85  
H: 1.18



RT16  
LP: 1.62, LB: 2.48  
WP: 1.57, WB: 1.81  
H: 1.42



RT17  
LP: 2.95, LB: 3.54  
WP: 1.42, WB: 1.84  
H: 1.37



RT18  
LP: 2.96, LB: 3.53  
WP: 1.43, WB: 1.79  
H: 1.39



RT19  
LP: 3.66, LB: 4.08  
WP: 1.44, WB: 1.92  
H: 1.67



RT20  
LP: 4.10, LB: 4.53  
WP: 2.16, WB: 2.53  
H: 1.46



RT21  
LP: 3.57, LB: 3.85  
WP: 2.05, WB: 2.45  
H: 1.47

All measurements are approximate and measured in inches (") without base  
W, L, D, H stands for Width, Length, Diameter and Height. The suffix P and B indicate measurement on Print level and Base level. Example: WB is width on Base; WP is max width on Print surface  
Print area depending on shape and other pad properties.  
Print surface is not necessarily the usable print area.

Copyright ©2020 - 2026 - ACCUPAD INC.

1324 Harris Bridge Road, Anderson SC29621 USA

Phone: 864 964 0900, Fax: 864 964 0206

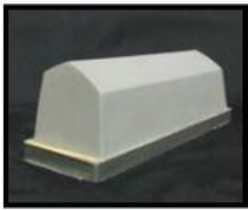
Email: sales@accupad.com

AccuPad Inc.



Web: <https://accupad.com>

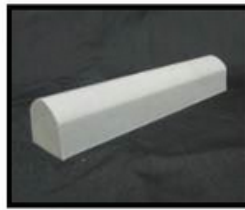
## Roof Top Shaped Print Pads – continued -



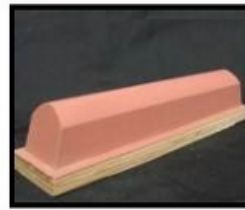
RT22  
LP: 4.58, LB: 5.09  
WP: 1.18, WB: 1.40  
H: 1.59



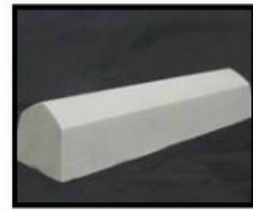
RT23  
LP: 4.82, LB: 5.93  
WP: 0.89, WB: 1.68  
H: 1.51



RT24  
LP: 5.83, LB: 5.93  
WP: 1.00, WB: 1.09  
H: 1.00



RT25  
LP: 5.97, LB: 6.56  
WB: 0.97, WB: 1.07  
H: 1.04



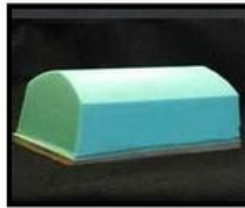
RT26  
LP: 6.82, LB: 7.41  
WP: 1.46, WB: 1.87  
H: 1.66



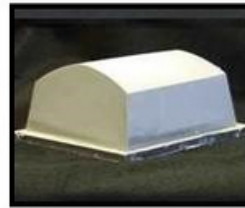
RT27  
LP: 11.88, LB: 12.25  
WP: 1.16, WB: 2.09  
H: 1.67



RT28  
LP: 4.96, LB: 6.48  
WP: 1.23, WB: 3.34  
H: 2.94



RT29  
LP: 6.26, LB: 7.14  
WP: 4.23, WB: 4.73  
H: 3.11



RT30  
LP: 5.16, LB: 6.09  
WP: 4.23, WB: 4.71  
H: 3.07



RT31  
LP: 11.42, LB: 11.73  
WP: 2.22, WB: 2.53  
H: 1.45



RT32  
LP: 12.50, LB: 13.75  
WP: 4.55, WB: 5.27  
H: 3.23



RT33  
LP: 23.00, LB: 23.00  
WP: 0.96, WB: 1.09  
H: 1.02



RT34  
LP: 1.74, LB: 2.14  
WP: 1.74, WB: 2.14  
H: 1.80



R35  
DP: 3.10, DB: 3.10  
H: 2.45



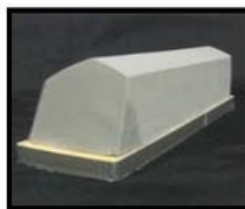
RT36  
DP: 1.77, DB: 2.97  
H: 2.06



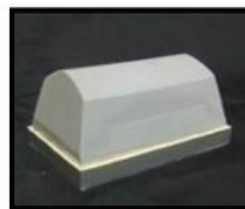
RT37  
LP: 4.37, LB: 4.45  
WP: 2.19, WB: 2.50  
H: 1.88



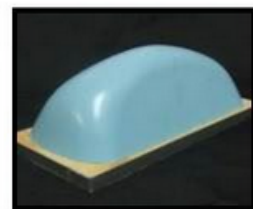
RT38  
LP: 4.18, LB: 4.26  
WP: 0.26, WB: 0.29  
H: 0.44



RT39  
LP: -, LB: 3.20  
WP: -, WB: 1.75  
H: 1.70



RT40  
LP: 2.54, LB: 3.05  
WP: 1.38, WB: 1.81  
H: 1.29



RT41  
LP: 4.71, LB: 5.75  
WP: 1.21, WB: 2.48  
H: 1.94

All measurements are approximate and measured in inches (") without base  
W, L, D, H stands for Width, Length, Diameter and Height. The suffix P and B indicate measurement on Print level and Base level. Example: WB is width on Base; WP is max width on Print surface  
Print area depending on shape and other pad properties.  
Print surface is not necessarily the usable print area.

Copyright ©2020 - 2026 - ACCUPAD INC.  
1324 Harris Bridge Road, Anderson SC29621 USA  
Phone: 864 964 0900, Fax: 864 964 0206  
Email: sales@accupad.com

AccuPad Inc.

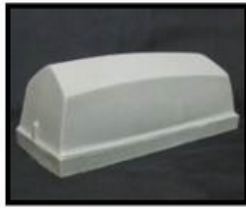


Web: <https://accupad.com>

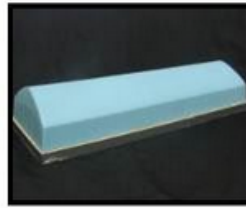
## Roof Top Shaped Print Pads – continued -



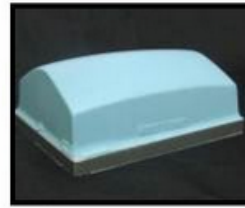
RT42  
LP: 5.05, LB: 5.77  
WP: 1.05, WB: 1.89  
H: 1.92



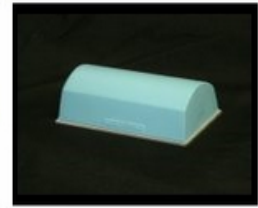
RT43  
LP: 5.15, LB: 6.06  
WP: 2.20, WB: 2.65  
H: 2.06



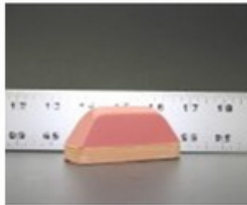
RT44  
LP: 11.06, LB: 11.50  
WP: 3.64, WB: 3.85  
H: 2.07



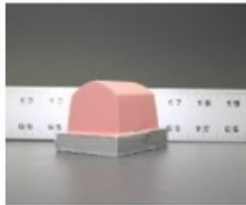
RT45  
LP: 4.10, LB: 4.41  
WP: 2.87, WB: 3.38  
H: 1.72



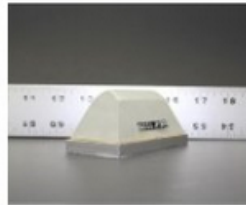
RT46  
LP: 3.98, LB: 4.17  
WP: 2.11, WB: 2.61  
H: 1.65



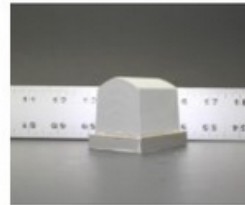
RT47  
LP: 1.70, LB: 2.93  
WP: 0.83, WB: 1.25  
H: 1.13



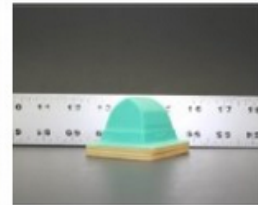
RT48  
LP: 1.87, LB: 2.15  
WP: 1.57, WB: 1.85  
H: 1.65



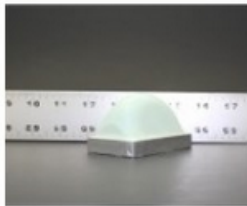
RT49  
LP: 2.20, LB: 3.39  
WP: 0.83, WB: 1.74  
H: 1.50



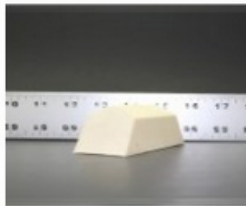
RT50  
LP: 1.97, LB: 2.11  
WP: 1.44, WB: 1.58  
H: 1.88



RT51  
LP: 1.20, LB: 1.76  
WP: 1.17, WB: 1.63  
H: 1.60



RT52  
LP: 2.24, LB: 2.78  
WP: 0.77, WB: 1.86  
H: 1.50



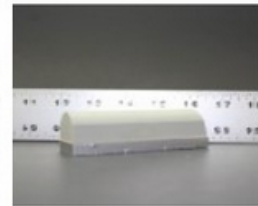
RT53  
LP: 1.97, LB: 3.38  
WP: 1.53, WB: 1.64  
H: 1.57



RT54  
LP: 5.90, LB: 6.27  
WP: 1.08, WB: 1.39  
H: 1.13



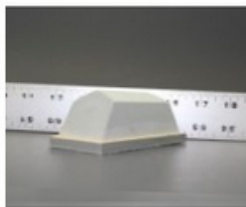
RT55  
LP: 4.38, LB: 4.51  
WP: 1.07, WB: 1.38  
H: 1.13



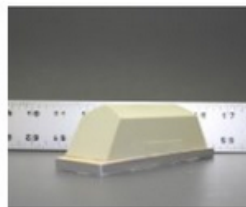
RT56  
LP: 3.84, LB: 4.01  
WP: 1.03, WB: 1.09  
H: 1.01



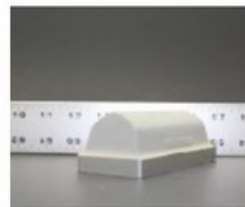
RT57  
LP: 4.51, LB: 4.59  
WP: 0.98, WB: 1.08  
H: 1.01



RT58  
LP: 2.29, LB: 3.68  
WP: 1.53, WB: 1.64  
H: 1.58



RT59  
LP: 3.01, LB: 4.43  
WP: 1.54, WB: 1.63  
H: 1.64



RT60  
LP: 3.61, LB: 4.06  
WP: 1.49, WB: 1.83  
H: 1.25



RT61  
LP: 3.17, LB: 4.20  
WP: 0.89, WB: 1.73  
H: 1.53

All measurements are approximate and measured in inches (") without base  
W, L, D, H stands for Width, Length, Diameter and Height. The suffix P and B indicate measurement on Print level and Base level. Example: WB is width on Base; WP is max width on Print surface  
Print area depending on shape and other pad properties.  
Print surface is not necessarily the usable print area.

Copyright ©2020 - 2026 - ACCUPAD INC.

1324 Harris Bridge Road, Anderson SC29621 USA

Phone: 864 964 0900, Fax: 864 964 0206

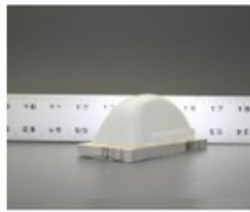
Email: sales@accupad.com

AccuPad Inc.

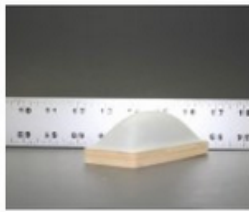


Web: <https://accupad.com>

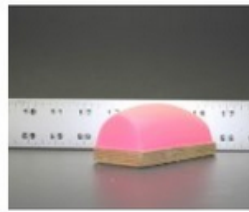
## Roof Top Shaped Print Pads – continued -



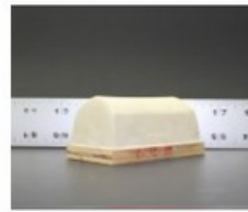
RT62  
LP: 2.67, LB: 3.69  
WP: 0.79, WB: 1.87  
H: 1.73



RT63  
LP: 2.66, LB: 3.92  
WP: 0.97, WB: 1.86  
H: 1.16



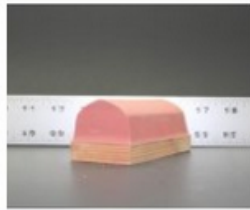
RT64  
LP: 3.38, LB: 3.54  
WP: 1.37, WB: 1.86  
H: 1.44



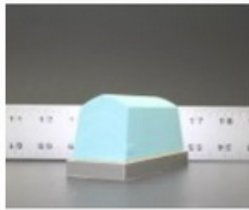
RT65  
LP: 2.85, LB: 3.27  
WP: 1.55, WB: 1.74  
H: 1.63



RT66  
LP: 3.74, LB: 4.62  
WP: 0.53, WB: 1.35  
H: 1.18



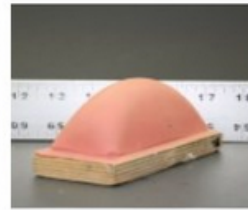
RT67  
LP: 3.38, LB: 3.65  
WP: 1.58, WB: 1.91  
H: 1.32



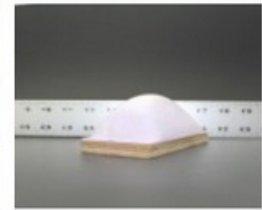
RT68  
LP: 2.91, LB: 3.59  
WP: 1.45, WB: 1.61  
H: 1.86



RT69  
LP: 3.43, LB: 3.95  
WP: 1.20, WB: 1.71  
H: 1.84



RT70  
LP: 3.34, LB: 4.56  
WP: 1.18, WB: 1.85  
H: 1.86



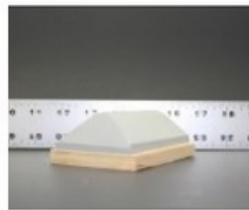
RT71  
LP: 3.22, LB: 4.42  
WP: 1.03, WB: 2.57  
H: 1.83



RT72  
LP: 3.03, LB: 3.13  
WP: 2.15, WB: 2.66  
H: 1.70



RT73  
LP: 3.51, LB: 3.64  
WP: 2.12, WB: 2.61  
H: 1.70



RT74  
LP: 2.85, LB: 3.42  
WP: 1.56, WB: 2.59  
H: 1.21



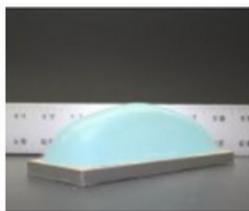
RT75  
LP: 3.45, LB: 3.81  
WP: 1.76, WB: 2.08  
H: 1.32



RT76  
LP: 4.16, LB: 4.87  
WP: 1.60, WB: 1.74  
H: 1.45



RT77  
LP: 3.00, LB: 3.50  
WP: 2.04, WB: 2.52  
H: 1.88



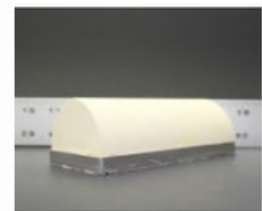
RT78  
LP: 4.48, LB: 5.53  
WP: 1.24, WB: 2.29  
H: 1.68



RT79  
LP: 3.65, LB: 4.52  
WP: 1.23, WB: 2.53  
H: 2.00



RT80  
LP: 5.58, LB: 5.68  
WP: 1.61, WB: 1.65  
H: 1.29



RT81  
LP: 5.24, LB: 5.32  
WP: 1.69, WB: 2.36  
H: 1.59

All measurements are approximate and measured in inches (") without base  
W, L, D, H stands for Width, Length, Diameter and Height. The suffix P and B indicate measurement on Print level and Base level. Example: WB is width on Base; WP is max width on Print surface  
Print area depending on shape and other pad properties.  
Print surface is not necessarily the usable print area.

Copyright ©2020 - 2026 - ACCUPAD INC.

1324 Harris Bridge Road, Anderson SC29621 USA

Phone: 864 964 0900, Fax: 864 964 0206

Email: sales@accupad.com

AccuPad Inc.

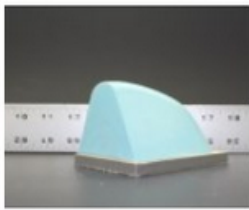


Web: <https://accupad.com>

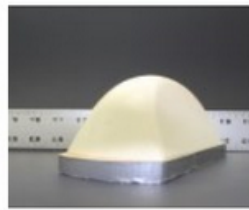
## Roof Top Shaped Print Pads – continued -



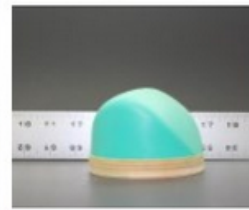
RT82  
LP: 5.16, LB: 5.55  
WP: 3.05, WB: 3.31  
H: 1.45



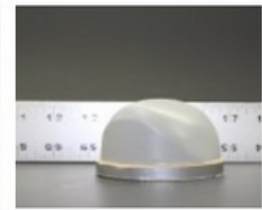
RT83  
LP: 2.78, LB: 3.46  
WP: 1.28, WB: 2.90  
H: 2.38



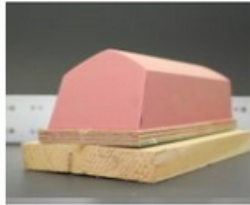
RT84  
LP: 4.83, LB: 6.21  
WP: 1.19, WB: 2.81  
H: 2.80



RT85  
OD: 2.98  
H: 1.76



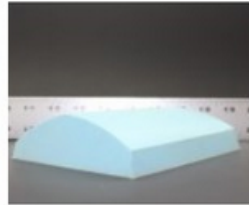
RT86  
OD: 3.62  
H: 2.29



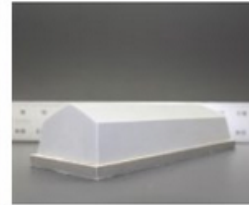
RT87  
LP: 4.95, LB: 5.73  
WP: 2.14, WB: 2.26  
H: 2.10



RT88  
LP: 6.65, LB: 6.92  
WP: 1.43, WB: 1.59  
H: 1.86



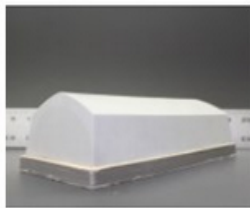
RT89  
LP: 5.15, LB: 5.57  
WP: 4.23, WB: 4.35  
H: 1.60



RT90  
LP: 6.15, LB: 6.70  
WP: 2.43, WB: 2.70  
H: 1.64



RT91  
LP: 4.47, LB: 4.85  
WP: 3.68, WB: 3.90  
H: 2.29



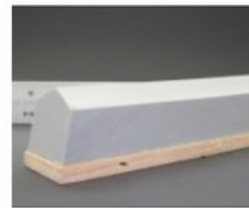
RT92  
LP: 6.43, LB: 6.96  
WP: 2.89, WB: 3.20  
H: 2.08



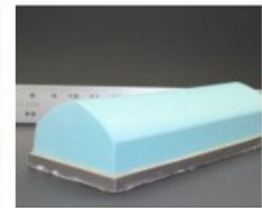
RT93  
LP: 8.42, LB: 8.89  
WP: 2.18, WB: 2.57  
H: 1.51



RT94  
LP: 8.88, LB: 9.80  
WP: 1.85, WB: 2.22  
H: 2.12



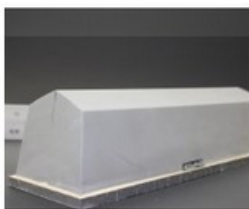
RT95  
LP: 9.00, LB: 9.83  
WP: 2.26, WB: 2.26  
H: 2.09



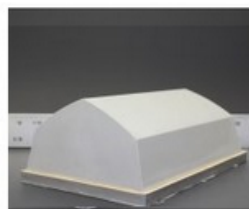
RT96  
LP: 8.60, LB: 9.03  
WP: 3.66, WB: 3.87  
H: 2.20



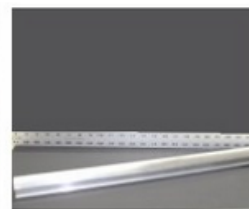
RT97  
LP: 9.06, LB: 9.51  
WP: 1.20, WB: 2.14  
H: 1.67



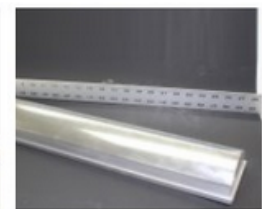
RT98  
LP: 9.95, LB: 11.04  
WP: 2.40, WB: 3.01  
H: 3.16



RT99  
LP: 6.48, LB: 7.23  
WP: 4.56, WB: 5.20  
H: 3.19



RT100  
LP: 24.00, LB: 24.00  
WP: 1.64, WB: 1.64  
H: 1.39



RT101  
LP: 22.25, LB: 22.49  
WP: 3.69, WB: 3.87  
H: 2.24

All measurements are approximate and measured in inches (") without base  
W, L, D, H stands for Width, Length, Diameter and Height. The suffix P and B indicate measurement on Print level and Base level. Example: WB is width on Base; WP is max width on Print surface  
Print area depending on shape and other pad properties.  
Print surface is not necessarily the usable print area.

Copyright ©2020 - 2026 - ACCUPAD INC.

1324 Harris Bridge Road, Anderson SC29621 USA

Phone: 864 964 0900, Fax: 864 964 0206

Email: sales@accupad.com

AccuPad Inc.

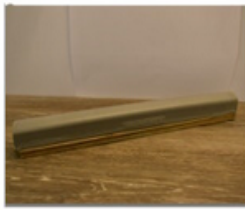


Web: <https://accupad.com>

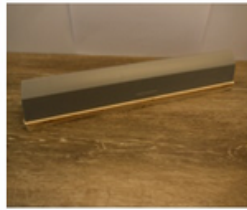
## Roof Top Shaped Print Pads – continued -



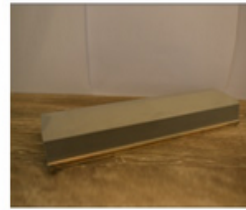
RT102  
LP: 10.85, LB: 10.98  
WP: 1.02, WB: 1.12  
H: 1.19



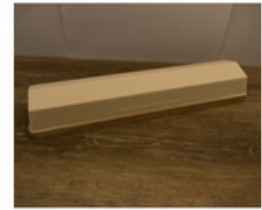
RT 103  
LP: 12.00 LB: 12.00  
WP: 1.17 WB: 1.28  
H: 1.03



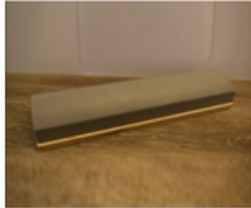
RT 104  
LP: 14.10 LB: 14.50  
WP: 1.46 WB: 1.90  
H: 1.70



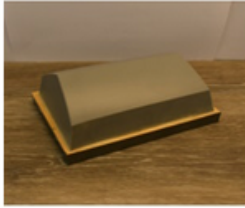
RT 105  
LP: 10.25 LB: 11.75  
WP: 2.82 WB: 3.55  
H: 2.00



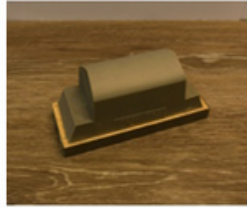
RT 106  
LP: 11.50 LB: 11.75  
WP: 2.15 WB: 2.52  
H: 1.42



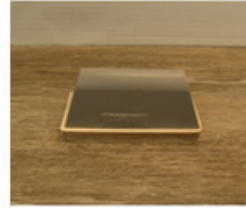
RT 107  
LP: 12.50 LB: 12.75  
WP: 3.70 WB: 3.85  
H: 2.17



RT 108  
LP: 4.88 LB: 5.73  
WP: 3.72 WB: 4.22  
H: 2.13



RT 109  
LP: 2.73 LB: 4.40  
WP: 1.53 WB: 1.65  
H: 1.60



RT 110  
LP: 3.12 LB: 4.26  
WP: 0.92 WB: 1.73  
H: 1.44



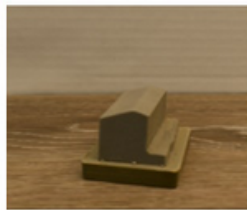
RT 111  
LP: 3.86 LB: 4.72  
WP: 1.01 WB: 1.97  
H: 1.66



RT 112  
LP: 1.99 LB: 2.29  
WP: 0.64 WB: 0.68  
H: 0.93



RT113  
LP: 1.25 LB: 1.25  
WP: 0.70 WB: 0.70  
H: 0.65



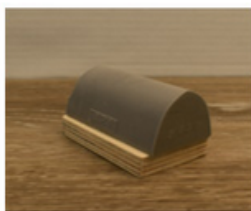
RT 114  
LP: 1.34 LB: 1.49  
WP: 0.63 WB: 0.87  
H: 0.86



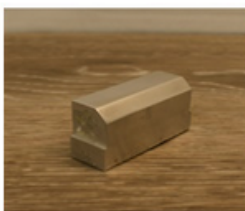
RT 115  
LP: 2.39 LB: 2.51  
WP: 1.28 WB: 2.07  
H: 1.02



RT 116  
LP: 2.53 LB: 2.78  
WP: 0.91 WB: 2.78  
H: 1.77



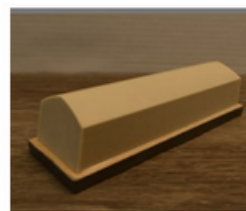
RT 117  
LP: 2.05 LB: 2.22  
WP: 0.73 WB: 1.21  
H: 1.18



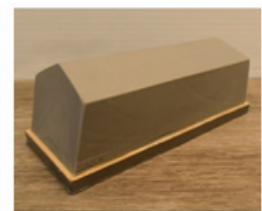
RT 118  
LP: 1.45 LB: 1.47  
WP: 0.36 WB: 0.50  
H: 0.46



RT 119  
LP: 2.54 LB: 2.86  
WP: 0.85 WB: 1.00  
H: 0.98



RT 120  
LP: 4.68 LB: 5.16  
WP: 1.45 WB: 1.56  
H: 1.36



RT 121  
LP: 5.03 LB: 5.91  
WP: 2.23 WB: 2.32  
H: 2.11

All measurements are approximate and measured in inches (") without base  
W, L, D, H stands for Width, Length, Diameter and Height. The suffix P and B indicate measurement on Print level and Base level. Example: WB is width on Base; WP is max width on Print surface  
Print area depending on shape and other pad properties.  
Print surface is not necessarily the usable print area.

Copyright ©2020 - 2026 - ACCUPAD INC.

1324 Harris Bridge Road, Anderson SC29621 USA

Phone: 864 964 0900, Fax: 864 964 0206

Email: sales@accupad.com

AccuPad Inc.

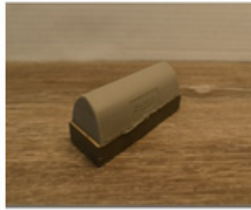


Web: <https://accupad.com>

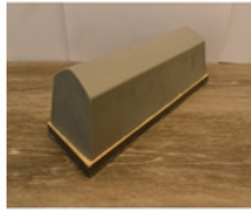
## Roof Top Shaped Print Pads – continued -



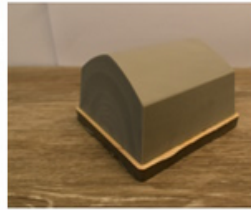
RT 122  
LP: 3.16 LB: 3.45  
WP: 0.88 WB: 1.21  
H: 0.81



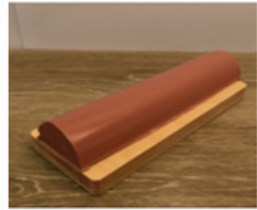
RT 123  
LP: 3.16 LB: 3.24  
WP: 0.88 WB: 1.18  
H: 0.82



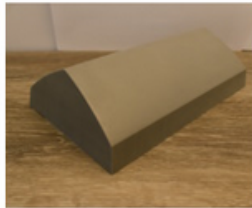
RT 124  
LP: 7.65 LB: 8.25  
WP: 2.18 WB: 2.68  
H: 2.11



RT 125  
LP: 3.05 LB: 3.57  
WP: 2.87 WB: 3.23  
H: 2.04



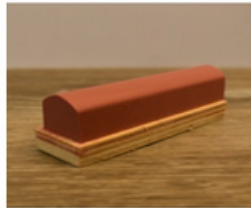
RT 126  
LP: 6.50 LB: 6.50  
WP: 1.45 WB: 1.56  
H: 0.80



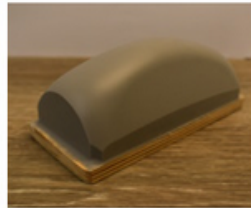
RT 127  
LP: 7.25 LB: 7.50  
WP: 4.52 WB: 4.58  
H: 2.07



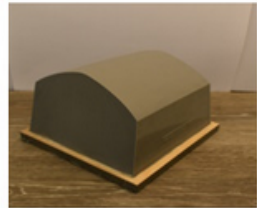
RT 128  
LP: 3.13 LB: 3.83  
WP: 0.84 WB: 1.38  
H: 1.03



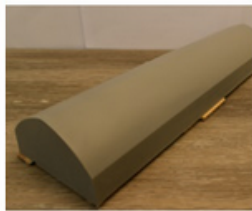
RT 129  
LP: 2.60 LB: 2.62  
WP: 0.60 WB: 0.67  
H: 0.65



RT 130  
LP: 4.46 LB: 4.65  
WP: 1.14 WB: 2.19  
H: 1.89



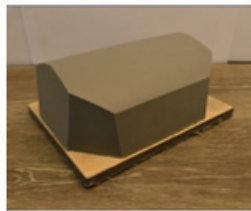
RT 131  
LP: 4.02 LB: 4.17  
WP: 4.22 WB: 4.70  
H: 3.08



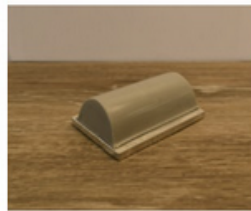
RT 132  
LP: 14.00 LB: 14.25  
WP: 3.67 WB: 3.81  
H: 2.10



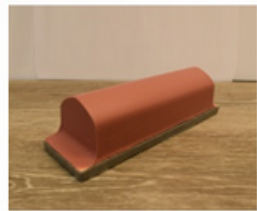
RT 133  
LP: 3.66 LB: 5.04  
WP: 3.27 WB: 3.50  
H: 2.25



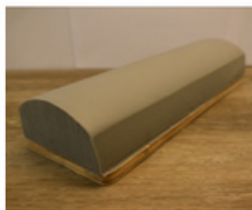
RT 134  
LP: 5.16 LB: 5.84  
WP: 4.20 WB: 4.54  
H: 2.49



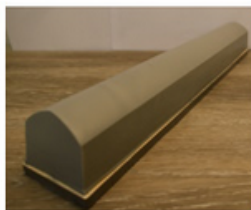
RT 135  
LP: 2.61 LB: 2.93  
WP: 1.22 WB: 1.62  
H: 1.00



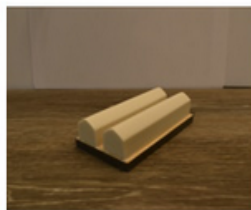
RT 136  
LP: 4.81 LB: 6.00  
WP: 1.65 WB: 1.94  
H: 1.59



RT 137  
LP: 11.75 LB: 11.60  
WP: 3.39 WB: 3.81  
H: 2.23



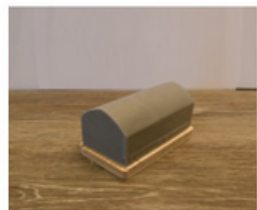
RT 138  
LP: 16.50 LB: 17.00  
WP: 2.18 WB: 2.38  
H: 1.98



RT 139  
LP: 3.74 LB: 3.80  
WP: 1.65 WB: 1.74  
H: 0.93



RT 140  
LP: 3.10 LB: 3.52  
WP: 1.67 WB: 1.84  
H: 1.63



RT 141  
LP: 3.12 LB: 3.25  
WP: 1.62 WB: 1.73  
H: 1.84

All measurements are approximate and measured in inches (") without base  
W, L, D, H stands for Width, Length, Diameter and Height. The suffix P and B indicate measurement  
on Print level and Base level. Example: WB is width on Base; WP is max width on Print surface  
Print area depending on shape and other pad properties.  
Print surface is not necessarily the usable print area.

Copyright ©2020 - 2026 - ACCUPAD INC.

1324 Harris Bridge Road, Anderson SC29621 USA

Phone: 864 964 0900, Fax: 864 964 0206

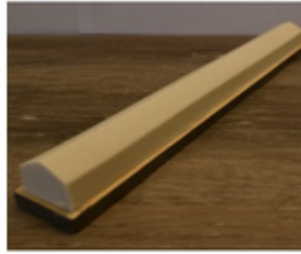
Email: sales@accupad.com

AccuPad Inc.



Web: <https://accupad.com>

## Roof Top Shaped Print Pads – continued -



RT 142  
 LP: 11.50 LB: 11.60  
 WP: 1.00 WB: 1.14  
 H: 0.90

## Elongated Print Pads



Long2  
 L: 4.88  
 W: 0.37  
 H: 0.42



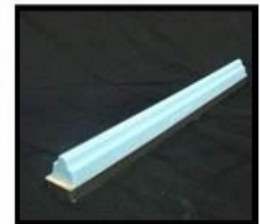
Long3  
 LP: 4.90, LB: 4.90  
 WP: 0.35, WB: 0.40  
 H: 0.39



Long4  
 LP: 4.93, LB: 4.92  
 WP: 0.37, WB: 0.39  
 H: 0.42



Long5  
 LP: 9.00, LB: 9.00  
 WP: 0.58, WB: 0.57  
 H: 0.71



Long6  
 LP: 9.75, LB: 9.81  
 WP: 0.26, WB: 0.70  
 H: 0.65



Long7  
 LP: 20.99, LB: 21.00  
 WP: 0.95, WB: 1.35  
 H: 0.96



Long8  
 LP: 20.00, LB: 20.00  
 WP: 1.67, WB: 1.65  
 H: 1.38



Long9  
 LP: 27.25, LB: 27.25  
 WP: 0.99, WB: 1.10  
 H: 1.01



Long10  
 LP: 26.00, LB: 26.00  
 WP: 2.10, WB: 2.33  
 H: 0.95

All measurements are approximate and measured in inches (") without base  
 W, L, D, H stands for Width, Length, Diameter and Height. The suffix P and B indicate measurement  
 on Print level and Base level. Example: WB is width on Base; WP is max width on Print surface  
 Print area depending on shape and other pad properties.  
 Print surface is not necessarily the usable print area.



## e Print Blankets



PB 1  
L: 2.34" W: 0.50"  
Thick: 0.25"



PB 2  
L: 2.40" W: 1.45"  
Thick: 0.25"



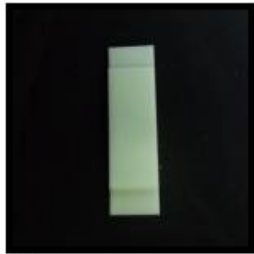
PB 3  
L: 2.53" W: 2.0"  
Thick: 0.25"



PB 4  
L: 2.2" W: 2.57"  
Thick: 0.25"



PB 5  
L: 2.57" W: 2.00"  
Thick: 0.5"



PB 6  
L: 3.5" W: 1.0"  
Thick: 0.25"



PB 7  
L: 2.86" W: 2.64"  
Thick: 0.3"



PB 8  
L: 4.4" W: 3.72"  
Thick: 0.25"



PB 9  
L: 5.78" W: 2.2"  
Thick: 0.5"



PB 10  
L: 6.2" W: 0.35"  
Thick: 0.25"



PB 11  
L: 10.58" W: 3.0"  
Thick: 0.25"



PB 12  
L: 11.0" W: 3.0"  
Thick: 0.25"

--->> Thickness measure includes 0.01" metal base !

All measurements are approximate and measured in inches (") without base  
W, L, D, H stands for Width, Length, Diameter and Height. The suffix P and B indicate measurement on Print level and Base level. Example: WB is width on Base; WP is max width on Print surface  
Print area depending on shape and other pad properties.  
Print surface is not necessarily the usable print area.



## Rotary Print Pads – Print Rollers



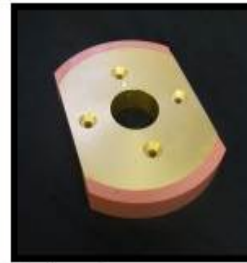
Rotary 1  
OD: 2.0"  
W: 0.43"



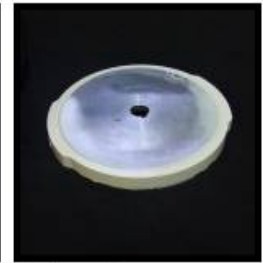
Rotary 2  
D: 2.5"  
W: 0.137"



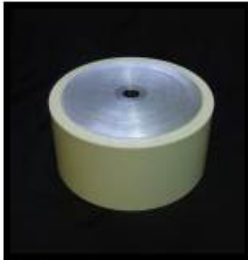
Rotary 3  
D: 2.42"  
W: 0.36"



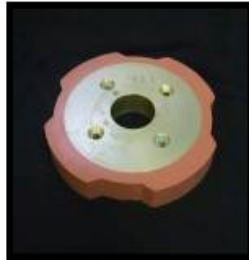
Rotary 4  
D: 8.0"  
W: 1.20"



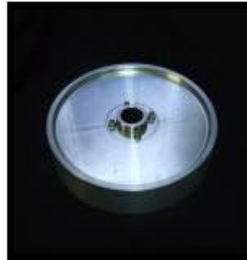
Rotary 5  
D: 8.0"  
W: 0.48"



Rotary 6  
D: 8.0"  
W: 3.33"



Rotary 7  
D: 8.0"  
W: 1.2"



Rotary 8  
D: 10.625"  
W: 2.00"

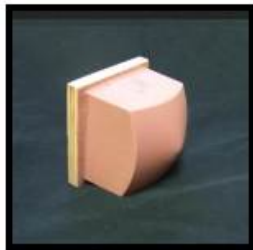


Rotary 9  
D: 11.375"  
W: 7.915"

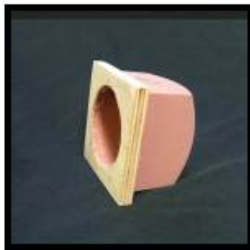
All measurements are approximate and measured in inches (") without base  
W, L, D, H stands for Width, Length, Diameter and Height. The suffix P and B indicate measurement on Print level and Base level. Example: WB is width on Base; WP is max width on Print surface  
Print area depending on shape and other pad properties.  
Print surface is not necessarily the usable print area.



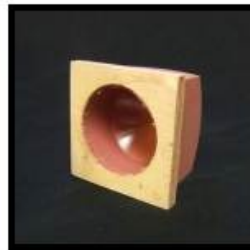
## Custom Print Pads



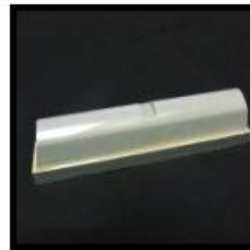
Custom 1



Custom 1a



Custom 1b



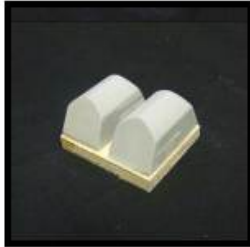
Custom 4



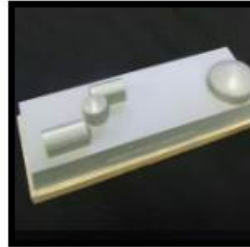
Custom 5



Custom 6



Custom 7



Custom 9



Custom 10



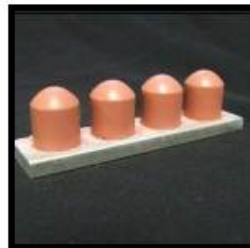
Custom 11



Custom 11a



Custom 12



Custom 13



Custom 14



Custom 15



Custom 16a



Custom 16



Custom 17



Custom 19



Custom 19

All measurements are approximate and measured in inches (") without base  
 W, L, D, H stands for Width, Length, Diameter and Height. The suffix P and B indicate measurement on Print level and Base level. Example: WB is width on Base; WP is max width on Print surface  
 Print area depending on shape and other pad properties.  
 Print surface is not necessarily the usable print area.

Copyright ©2020 - 2026 - ACCUPAD INC.  
 1324 Harris Bridge Road, Anderson SC29621 USA  
 Phone: 864 964 0900, Fax: 864 964 0206  
 Email: sales@accupad.com

AccuPad Inc.

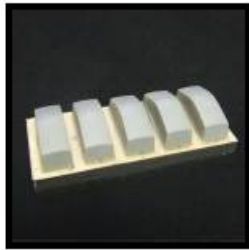


Web: <https://accupad.com>

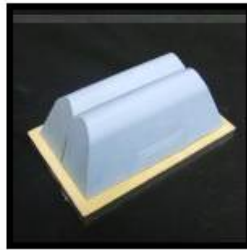
## Custom Print Pads – continued -



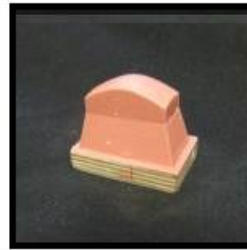
Custom 20



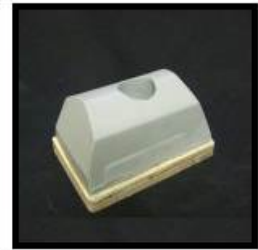
Custom 22



Custom 27



Custom 28



Custom 31



Custom 32



Custom 33



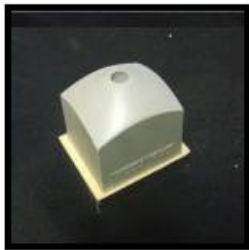
Custom 34



Custom 35



Custom 36



Custom 37

All measurements are approximate and measured in inches (") without base  
 W, L, D, H stands for Width, Length, Diameter and Height. The suffix P and B indicate measurement  
 on Print level and Base level. Example: WB is width on Base; WP is max width on Print surface  
 Print area depending on shape and other pad properties.  
 Print surface is not necessarily the usable print area.



**Copyright ©2020 - 2026 - ACCUPAD INC.**  
1324 Harris Bridge Road, Anderson SC29621 USA  
Phone: 864 964 0900, Fax: 864 964 0206  
Email: [sales@accupad.com](mailto:sales@accupad.com)

AccuPad Inc.



Web: <https://accupad.com>