



Product Catalog 2014

- [About AccuPad's Print Pads](#)
- [Round Print Pad](#)
- [Cone Shaped Print Pads](#)
- [Square / Rectangular Print Pads](#)
- [Roof Top Shaped Pads](#)
- [Elongated Print Pads](#)
- [Print Blankets](#)
- [Rotary Print Pads / Rollers](#)
- [Custom and Unique Shaped Print Pads](#)
- [Silicone Molded Product](#)
- [Compression Pads](#)

[Product Inquiry Form](#)

About AccuPad and Silicone Print Pads

Why Silicone Print Pads form AccuPad?

AccuPad designs and manufactures Silicone Print Pads to meet the highest print quality requirements since its foundation in 1991.

Our customer base includes many of the largest companies in the US and throughout the world. With a large inventory of standard shapes available, AccuPad can ship orders within 24h. Custom designed pads are typically shipped within a week.

Our Goal

Consistently manufacture and deliver the highest quality Silicone Print Pad that will exceed the customers print job requirements.

We take an individual approach to solve our customers printing problems.

To Order

- Email Us
- Call our Sales Department at 864 964 0900
- Fax your inquiry or order: 864 964 0206
- Email Sales at sales@accupad.com
- All pads are available
 - ◆ Durometer "A" scale and "00" scale
 - ◆ on metal, wood or custom molded bases
 - ◆ multiple colors



Round Silicone Print Pads



R1
Dia: 0.42"
H: 0.50"



R2
Dia: 0.50"
H: 0.81"



R3
Dia: 0.59"
H: 0.68"



R4
Dia: 0.63"
H: 0.79"



R5
Dia: 0.63"
H: 0.75"



R6
Dia: 0.80"
H: 0.86"



R7
Dia: 0.91"
H: 1.03"



R8
Dia: 1.09"
H: 0.87"



R9
Dia: 1.09"
H: 0.86"



R10
Dia: 1.18"
H: 1.01"



R11
Dia: 1.14"
H: 1.16"



R12
Dia: 1.14"
H: 1.21"



R13
Dia: 1.05"
H: 0.85"



R14
Dia: 1.12"
H: 1.13"



R15
Dia: 1.24"
H: 1.37"



R16
Dia: 1.18"
H: 1.26"

Round Silicone Print Pads – continued



R17
Dia: 0.97"
H: 1.55"



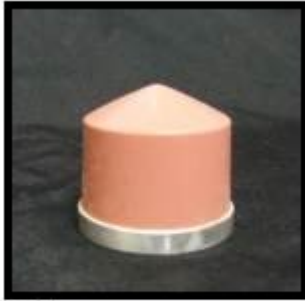
R18
Dia: 1.61"
H: 1.34"



R19
Dia: 1.62"
H: 1.64"



R20
Dia: 1.83"
H: 1.82"



R21
Dia: 1.66"
H: 1.31"



R22
Dia: 1.74"
H: 1.48"



R23
Dia: 1.67"
H: 1.55"



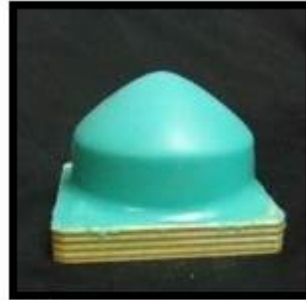
R24
Dia: 1.59"
H: 1.43"



R25
Dia: 1.61"
H: 1.32"



R26
Dia: 2.25"
H: 1.95"



R27
Dia: 2.16"
H: 1.38"



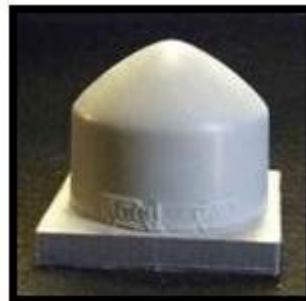
R28
Dia: 2.16"
H: 1.82"



R29
Dia: 2.43"
H: 2.03"



R30
Dia: 2.24"
H: 1.96"



R31
Dia: 2.26"
H: 1.80"



R32
Dia: 2.30"
H: 1.70"

Round Silicone Print Pads – continued



R33
Dia: 2.20"
H: 2.12"



R34
Dia: 2.44"
H: 2.17"



R35
Dia: 2.59"
H: 1.85"



R36
Dia: 2.60"
H: 1.70"



R37
Dia: 2.26"
H: 1.96"



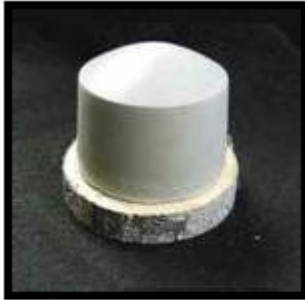
R38
Dia: 2.53"
H: 2.14"



R39
Dia: 2.94"
H: 1.79"



R40
Dia: 3.38"
H: 2.27"



R41
Dia: 3.18"
H: 2.24"



R42
Dia: 3.05"
H: 1.74"



R43
Dia: 2.96"
H: 2.18"



R44
Dia: 3.37"
H: 2.12"



R45
Dia: 3.34"
H: 2.17"



R46
Dia: 3.88"
H: 1.63"



R47
Dia: 3.40"
H: 1.85"



R48
Dia: 3.41"
H: 2.16"

Round Silicone Print Pads – continued



R49
Dia: 3.20"
H: 2.51"



R50
Dia: 3.00"
H: 2.45"



R51
Dia: 4.00"
H: 3.50"



R52
Dia: 3.43"
H: 2.67"



R53
Dia: 3.50"
H: 3.23"



R54
Dia: 3.76"
H: 1.41"



R55
Dia: 3.92"
H: 2.32"



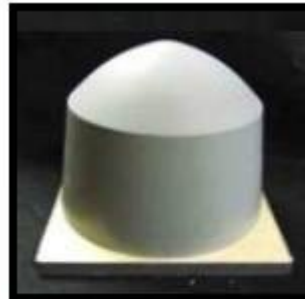
R56
Dia: 4.88"
H: 2.50"



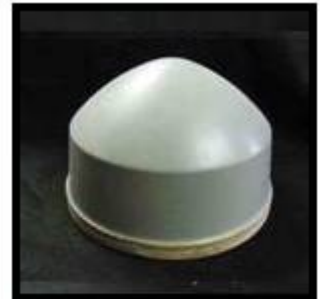
R57
Dia: 5.09"
H: 2.76"



R58
Dia: 4.75"
H: 3.50"



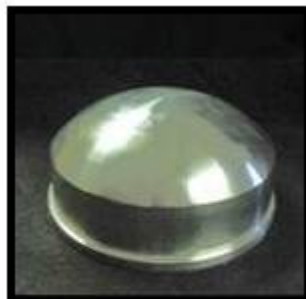
R59
Dia: 5.30"
H: 4.36"



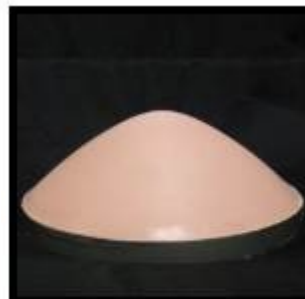
R60
Dia: 5.80"
H: 3.72"



R61
Dia: 6.11"
H: 3.63"



R62
Dia: 5.75"
H: 2.40"



R63
Dia: 7.50"
H: 2.62"



R64
Dia: 7.50"
H: 5.27"

Round Silicone Print Pads – continued



R65
Dia: 13"
H: 10"



- All measurements are approximate and measured without base
- All print pads are available in various colors, durometer hardness, base materials and mounting thread!
- Please inquire or specify before ordering. [See our inquiry form!](#)

Cone Shaped Silicone Print Pads



Cone 1
OD: 0.864"
H: 0.54"



Cone 2
OD: 1.04"
H: 0.847"



Cone 3
OD: 1.08"
H: 0.868"



Cone 4
OD: 1.16"
H: 1.00"



Cone 5
OD: 1.16"
H: 0.971"



Cone 6
OD: 1.69"
H: 1.43"



Cone 7
OD: 2.15"
H: 1.65"



Cone 8
OD: 1.98"
H: 1.95"



Cone 9
OD: 2.04"
H: 2.03"



Cone 10
OD: 2.30"
H: 2.31"



Cone 11
OD: 2.35"
H: 2.26"



Cone 12
OD: 2.35"
H: 2.19"



Cone 13
OD: 3.00"
H: 2.09"



Cone 14
OD: 3.15"
H: 2.49"



Cone 15
OD: 3.14"
H: 2.35"



Cone 16
OD: 3.25"
H: 3.00"

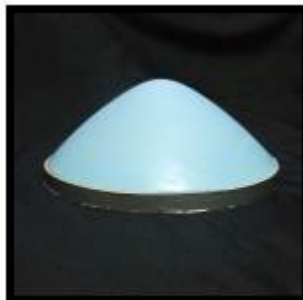
Cone Shaped Silicone Print Pads - continued



Cone 17
OD: 3.83"
H: 2.17"



Cone 18
OD: 3.83"
H: 2.17"



Cone: 19
OD: 7.43"
H: 3.68"



- All measurements are approximate and measured without base
- All print pads are available in various colors, durometer hardness, base materials and mounting thread!
- Please inquire or specify before ordering. [See our inquiry form!](#)

Square and Rectangular Silicone Print Pads



SR 1
L: 0.77" W: 0.39"
H: 0.66"



SR 2
L: 0.78" W: 0.61"
H: 0.64"



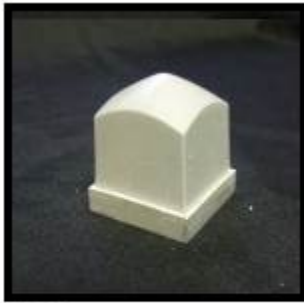
SR 3
L: 0.91" W: 0.58"
H: 0.78"



SR 4
L: 1.19" W: 0.48"
H: 0.69"



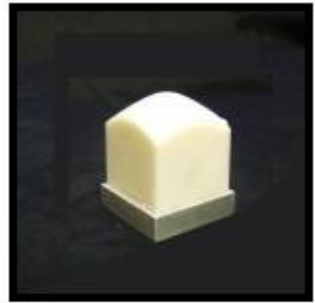
SR 5
L: 1.27" W: 0.44"
H: 1.18"



SR 6
L: 1.14" W: 1.14"
H: 1.20"



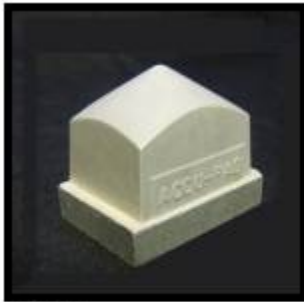
SR 7
L: 1.14" W: 1.14"
H: 1.15"



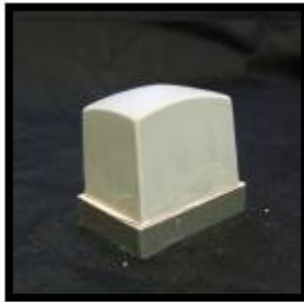
SR 8
L: 1.13" W: 1.13"
H: 1.23"



SR 9
L: 1.47" W: 1.11"
H: 1.31"



SR 10
L: 1.48" W: 1.21"
H: 1.15"



SR 11
L: 1.59" W: 1.20"
H: 1.29"



SR 12
L: 1.48" W: 1.21"
H: 1.35"



SR 13
L: 1.60" W: 1.41"
H: 1.32"



SR 14
L: 1.80" W: 1.52"
H: 1.46"



SR 15
L: 1.57" W: 1.11"
H: 1.63"



SR 16
L: 2.02" W: 0.74"
H: 1.24"

Copyright ©2014 - ACCUPAD INC.

AccuPad Inc. 1324 Harris Bridge Road, Anderson SC29621 USA, Phone: 864 964 0900, Fax: 864 964 0206, Email sales@accupad.com

Square and Rectangular Silicone Print Pads - continued



SR 17
L: 1.59" W: 0.90"
H: 1.16"



SR 18
L: 1.95" W: 0.66"
H: 1.23"



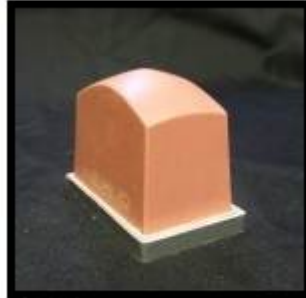
SR 19
L: 1.80" W: 1.20"
H: 0.88"



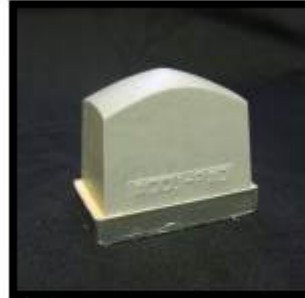
SR 20
L: 1.60" W: 1.58"
H: 1.64"



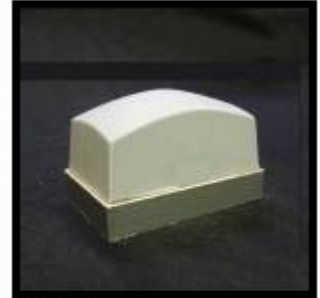
SR 21
L: 1.88" W: 1.17"
H: 1.79"



SR 22
L: 2.08" W: 1.22"
H: 1.63"



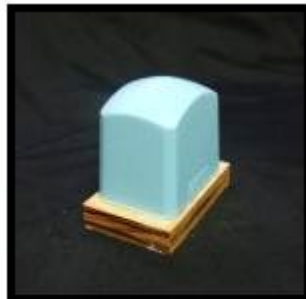
SR 23
L: 2.11" W: 1.27"
H: 1.64"



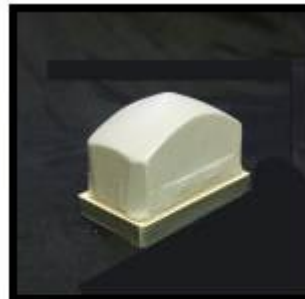
SR 24
L: 2.54" W: 1.54"
H: 1.23"



SR 25
L: 2.16" W: 1.54"
H: 2.00"



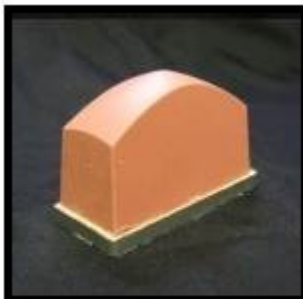
SR 26
L: 2.20" W: 1.60"
H: 2.02"



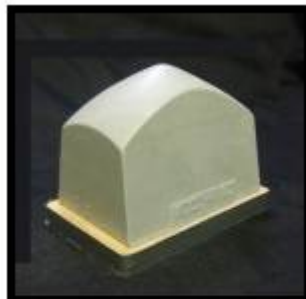
SR 27
L: 2.48" W: 1.55"
H: 1.69"



SR 28
L: 2.65" W: 1.63"
H: 1.66"



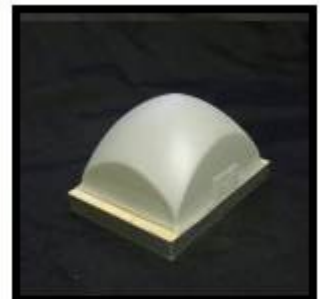
SR 29
L: 2.89" W: 1.23"
H: 1.77"



SR 30
L: 2.78" W: 1.90"
H: 2.18"



SR 31
L: 2.86" W: 1.26"
W: 1.80"

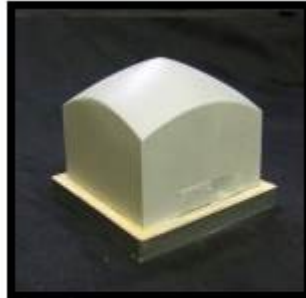


SR 32
L: 2.42" W: 2.23"
H: 1.51"

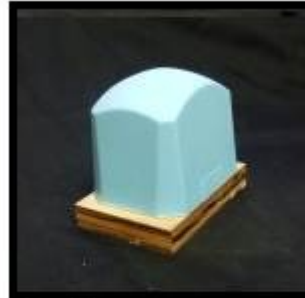
Square and Rectangular Silicone Print Pads - continued



SR 33
L: 2.52" W: 2.50"
H: 2.44"



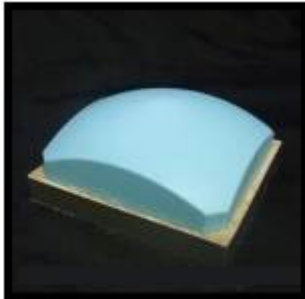
SR 34
L: 2.52" W: 2.52"
H: 2.16"



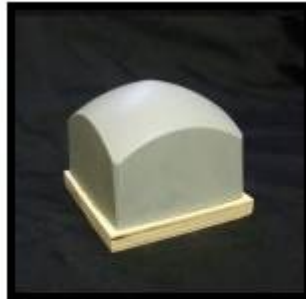
SR 35
L: 2.70" W: 2.07"
H: 2.25"



SR 36
L: 2.75" W: 2.29"
H: 2.50"



SR 37
L: 3.32" W: 2.96"
H: 1.64"



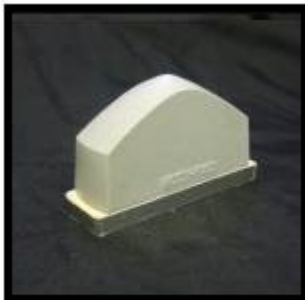
SR 38
L: 2.92" W: 2.88"
H: 2.28"



SR 39
L: 3.13" W: 2.88"
H: 1.98"



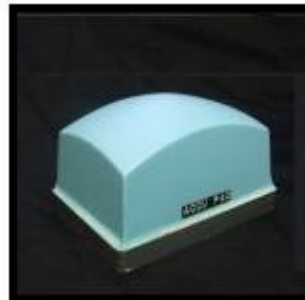
SR 40
L: 3.39" W: 2.53"
H: 2.28"



SR 41
L: 3.86" W: 1.30"
H: 2.17"



SR 42
L: 4.01" W: 1.65"
H: 2.08"



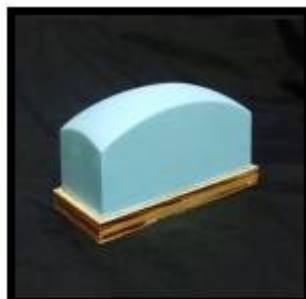
SR 43
L: 4.21" W: 3.05"
H: 2.29"



SR 44
L: 4.78" W: 3.12"
H: 2.52"



SR 45
L: 5.12" W: 2.05"
H: 2.32"



SR 46
L: 4.71" W: 1.99"
H: 2.36"

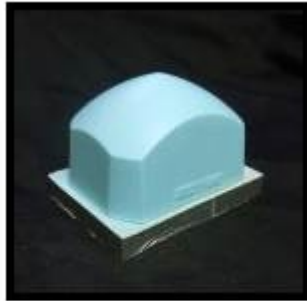


SR 47
L: 3.93" W: 2.66"
H: 2.32"



SR 48
L: 4.17" W: 2.81"
H: 2.56"

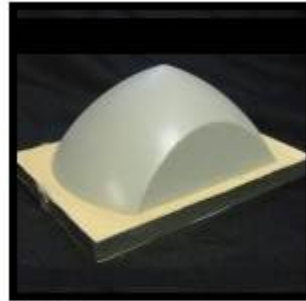
Square and Rectangular Silicone Print Pads - continued



SR 49
L: 3.59" W: 2.72"
H: 2.34"



SR 50
L: 4.08" W: 3.62"
H: 2.15"



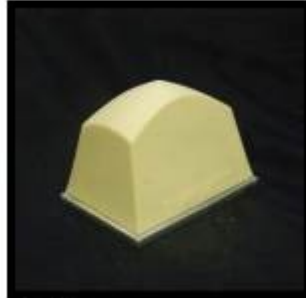
SR 51
L: 4.35" W: 2.99"
H: 1.79"



SR 52
L: 4.18" W: 3.18"
H: 2.66"



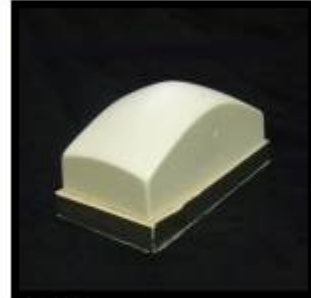
SR 53
L: 4.51" W: 2.81"
H: 3.12"



SR 54
L: 4.46" W: 3.04"
H: 3.00"



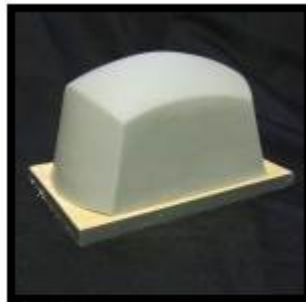
SR 55
L: 4.80" W: 3.11"
H: 2.50"



SR 56
L: 5.06" W: 2.63"
H: 2.10"



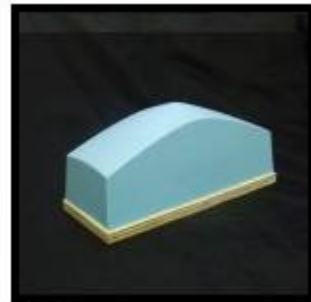
SR 57
L: 5.18" W: 3.08"
H: 1.84"



SR 58
L: 5.33" W: 3.31"
H: 2.93"



SR 59
L: 7.31" W: 3.34"
H: 2.63"



SR 60
L: 7.28" W: 2.84"
H: 3.00"



SR 61
L: 7.95" W: 2.08"
H: 2.96"



SR 62
L: 7.38" W: 2.92"
H: 3.66"



SR 63
L: 6.04" W: 4.70"
H: 3.17"

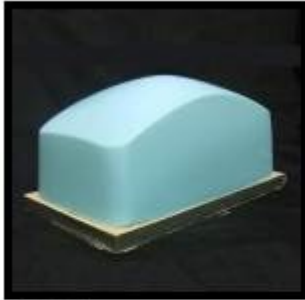


SR 64
L: 7.41" W: 3.36"
H: 3.36"

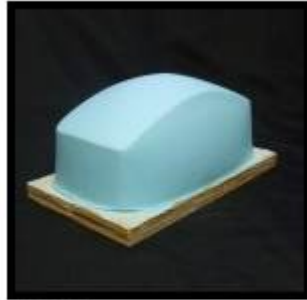
Copyright ©2014 - ACCUPAD INC.

AccuPad Inc. 1324 Harris Bridge Road, Anderson SC29621 USA, Phone: 864 964 0900, Fax: 864 964 0206, Email sales@accupad.com

Square and Rectangular Silicone Print Pads - continued



SR 65
L: 7.47" W: 4.33"
H: 3.71"

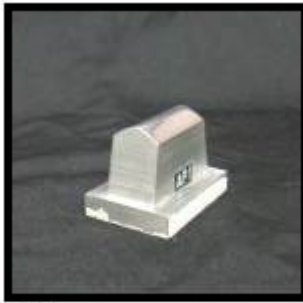


SR 66
L: 7.50" W: 4.52"
H: 3.47"

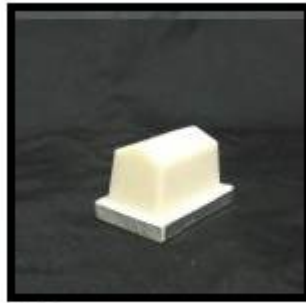


- All measurements are approximate and measured without base
- All print pads are available in various colors, durometer hardness, base materials and mounting thread!
- Please inquire or specify before ordering. [See our inquiry form!](#)

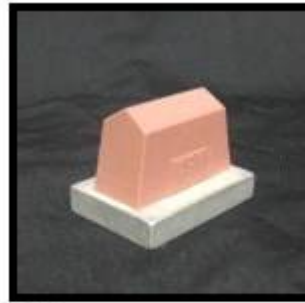
Roof Top Shaped Silicone Print Pads



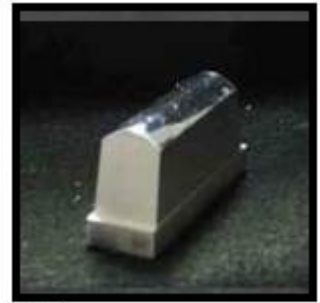
RT1
L: 1.57" W: 0.7"
H: 0.93"



RT2
L: 1.75" W: 0.83"
H: 0.85"



RT3
L: 1.55" W: 0.65"
H: 0.94"



RT4
L: 2.32" W: 0.7"
H: 0.94"



RT5
L: 2.75" W: 0.84"
H: 0.92"



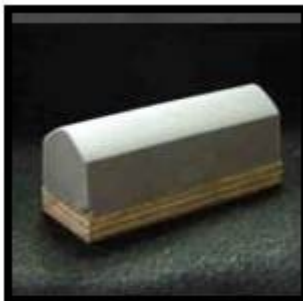
RT6
L: 2.68" W: 1.10"
H: 1.00"



RT7
L: 3.47" W: 1.10"
H: 1.00"



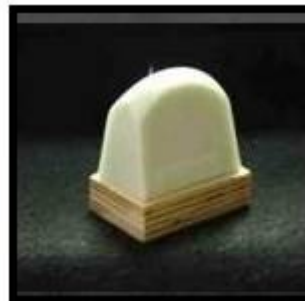
RT8
L: 3.75" W: 1.12"
H: 1.10"



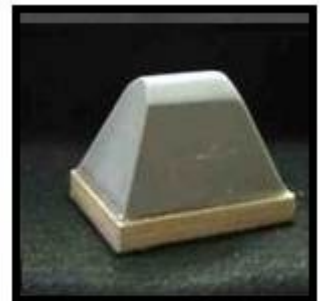
RT9
L: 3.30" W: 1.15"
H: 1.03"



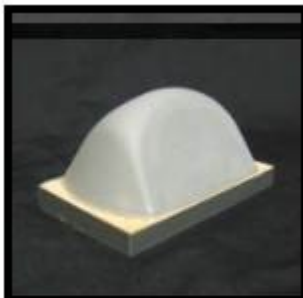
RT10
L: 3.45" W: 1.10"
H: 1.00"



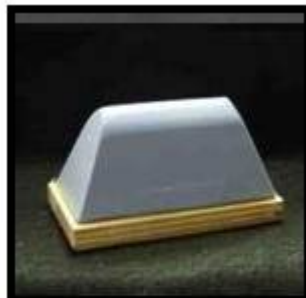
RT11
L: 2.00" W: 1.25"
H: 1.75"



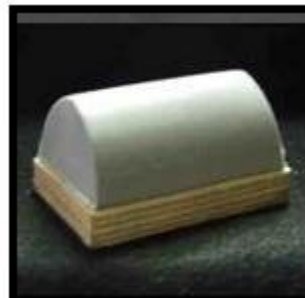
RT12
L: 2.35" W: 1.75"
H: 1.55"



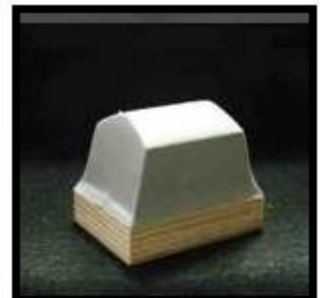
RT13
L: 3.25" W: 2.00"
H: 1.34"



RT14
L: 3.35" W: 1.70"
H: 1.53"



RT15
L: 2.90" W: 1.88"
H: 1.18"

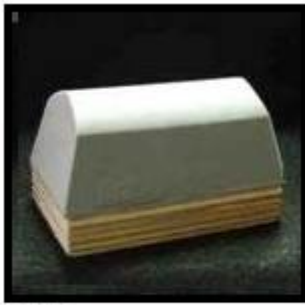


RT16
L: 2.50" W: 1.88"
H: 1.42"

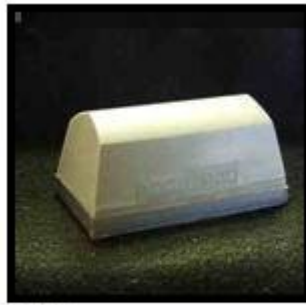
Copyright ©2014 - ACCUPAD INC.

AccuPad Inc. 1324 Harris Bridge Road, Anderson SC29621 USA, Phone: 864 964 0900, Fax: 864 964 0206, Email sales@accupad.com

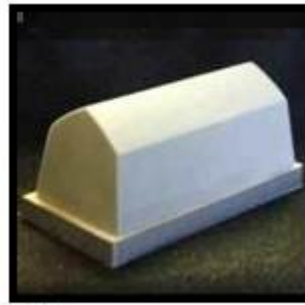
Roof Top Shaped Silicone Print Pads – continued



RT17
L: 3.58" W: 1.83"
H: 1.37"



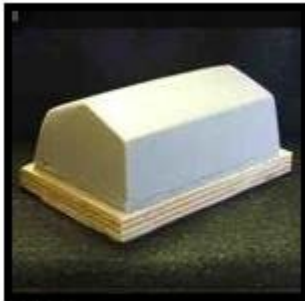
RT18
L: 3.53" W: 1.80"
H: 1.38"



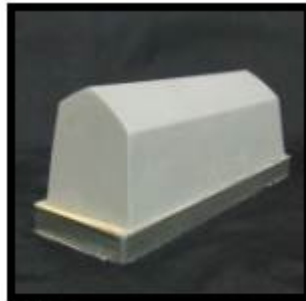
RT19
L: 4.09" W: 1.09"
H: 1.64"



RT20
L: 4.51" W: 2.50"
H: 1.47"



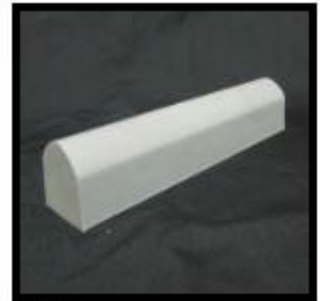
RT21
L: 3.87" W: 2.45"
H: 1.50"



RT22
L: 5.05" W: 1.42"
H: 1.62"



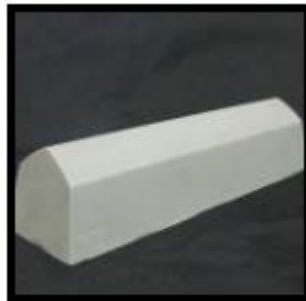
RT23
L: 6.00" W: 1.42"
H: 1.62"



RT24
L: 5.91" W: 1.11"
H: 1.00"



RT25
L: 6.95" W: 1.50"
H: 1.06"



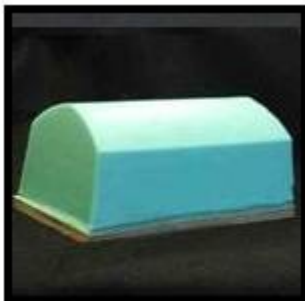
RT26
L: 7.36" W: 1.90"
H: 1.30"



RT27
L: 12.25" W: 2.10"
H: 1.66"



RT28
L: 6.46" W: 3.37"
H: 2.97"



RT29
L: 7.00" W: 4.70"
H: 3.08"



RT30
L: 6.10" W: 4.72"
H: 3.10"



RT31
L: 11.75" W: 2.55"
H: 1.50"



RT32
L: 13.88" W: 5.25"
H: 3.21"

Roof Top Shaped Silicone Print Pads – continued



RT33
L: 23.0" W: 1.2"
H: 1.60"



RT34
L: 2.81" W: 2.47"
H: 1.75"



RT35
OD: 3.54"
H: 1.90"



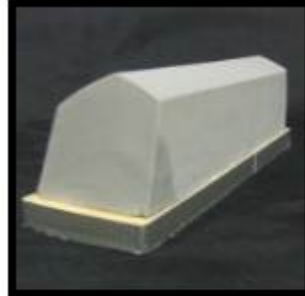
RT36
OD: 3.20"
H: 2.04"



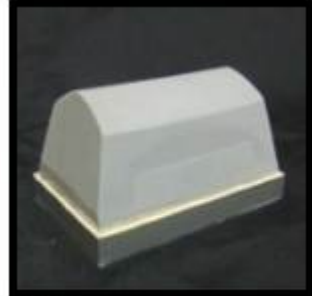
RT37
L: 4.44" W: 2.51"
H: 1.82"



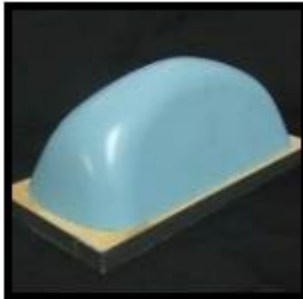
RT38
L: 3.90" W: 0.31"
H: 0.39"



RT39
L: 3.20" W: 1.75"
H: 1.70"



RT40
L: 3.10" W: 1.80"
H: 1.30"



RT41
L: 5.70" W: 2.50"
H: 1.95"



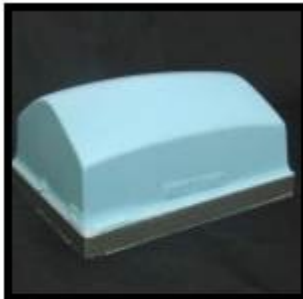
RT42
L: 5.75" W: 1.81"
H: 1.90"



RT43
L: 5.92" W: 2.50"
H: 2.05"



RT44
L: 11.5" W: 3.9"
H: 2.1"



RT45
L: 4.35" W: 3.25"
H: 1.75"



RT46
L: 4.13" W: 2.61"
H: 1.66"



- All measurements are approximate and measured without base
- All print pads are available in various colors, durometer and bases.

Copyright ©2014 - ACCUPAD INC.

AccuPad Inc. 1324 Harris Bridge Road, Anderson SC29621 USA, Phone: 864 964 0900, Fax: 864 964 0206, Email sales@accupad.com

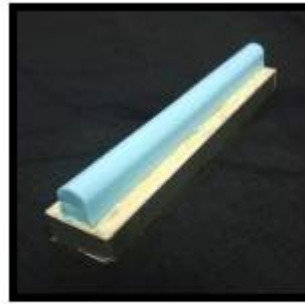
Elongated Silicone Print Pads



Long 2
L: 4.85" W: 0.35"
H: 0.40"



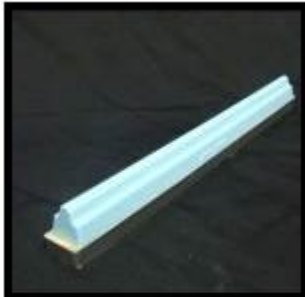
Long 3
L: 4.89" W: 0.40"
H: 0.41"



Long 4
L: 4.92" W: 0.40"
H: 0.40"



Long 5
L: 9.00" W: 0.577"
H: 0.68"



Long 6
L: 9.81" W: 0.577"
H: 0.68"



Long 7
L: 20.93" W: 1.39"
H: 0.96"



Long 8
L: 20.0" W: 1.64"
H: 1.32"



Long 9
L: 27.25" W: 1.03"
H: 0.97"



Long 10
L: 26.00" W: 2.32"
H: 0.93"



- All measurements are approximate and measured without base
- All print pads are available in various colors, durometer hardness, base materials and mounting thread!
- Please inquire or specify before ordering. [See our inquiry form!](#)

Copyright ©2014 - ACCUPAD INC.

AccuPad Inc. 1324 Harris Bridge Road, Anderson SC29621 USA, Phone: 864 964 0900, Fax: 864 964 0206, Email sales@accupad.com

Silicone Print Blankets



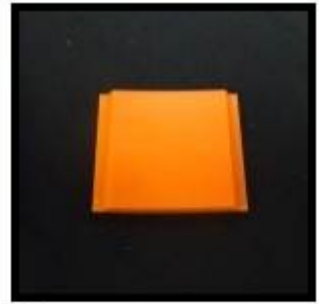
PB 1
L: 2.34" W: 0.50"
Thick: 0.25"



PB 2
L: 2.40" W: 1.45"
Thick: 0.25"



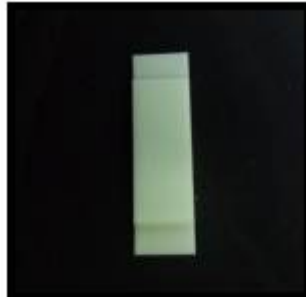
PB 3
L: 2.53" W: 2.0"
Thick: 0.25"



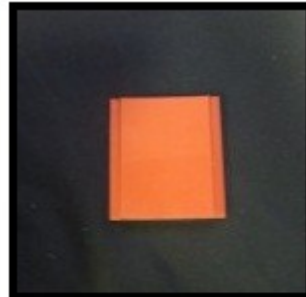
PB 4
L: 2.2" W: 2.57"
Thick: 0.25"



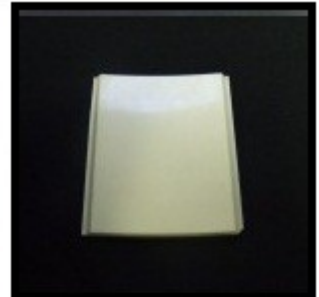
PB 5
L: 2.57" W: 2.00"
Thick: 0.5"



PB 6
L: 3.5" W: 1.0"
Thick: 0.25"



PB 7
L: 2.86" W: 2.64"
Thick: 0.3"



PB 8
L: 4.4" W: 3.72"
Thick: 0.25"



PB 9
L: 5.78" W: 2.2"
Thick: 0.5"



PB 10
L: 6.2" W: 0.35"
Thick: 0.25"



PB 11
L: 10.58" W: 3.0"
Thick: 0.25"



PB 12
L: 11.0" W: 3.0"
Thick: 0.25"

--->> **Thickness measure includes 0.01" metal base !**



- All measurements are approximate and measured without base
- All print pads are available in various colors, durometer hardness, base materials and mounting thread!

- Please inquire or specify before ordering. [See our inquiry form!](#)

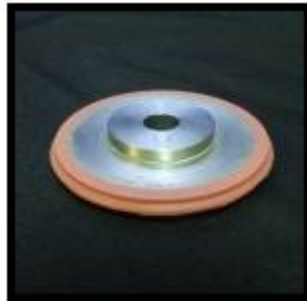
Copyright ©2014 - ACCUPAD INC.

AccuPad Inc. 1324 Harris Bridge Road, Anderson SC29621 USA, Phone: 864 964 0900, Fax: 864 964 0206, Email sales@accupad.com

Rotary Print Pads - Print Roller



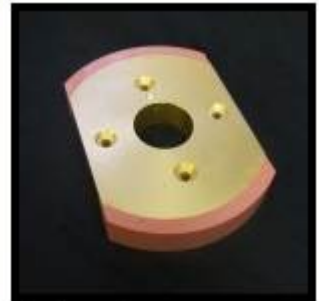
Rotary 1
OD: 2.0"
W: 0.43"



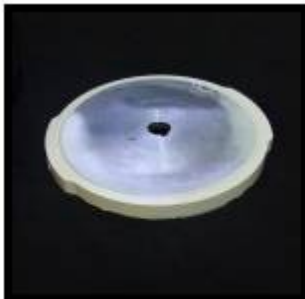
Rotary 2
D: 2.5"
W: 0.137"



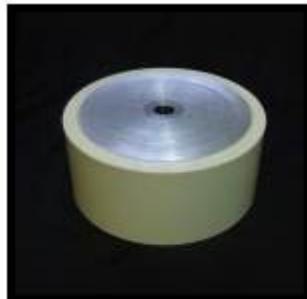
Rotary 3
D: 2.42"
W: 0.36"



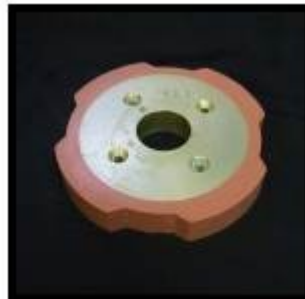
Rotary 4
D: 8.0"
W: 1.20"



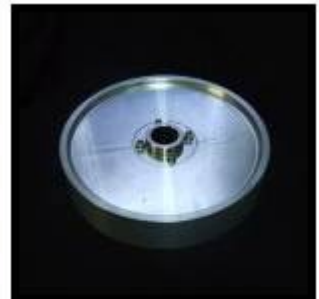
Rotary 5
D: 8.0"
W: 0.48"



Rotary 6
D: 8.0"
W: 3.33"



Rotary 7
D: 8.0"
W: 1.2"



Rotary 8
D: 10.625"
W: 2.00"



Rotary 9
D: 11.375"
W: 7.915"



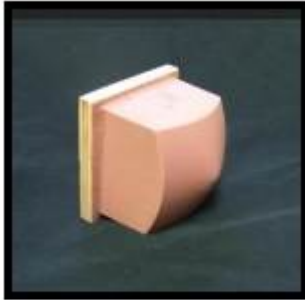
- All measurements are approximate and measured without base
- All print pads are available in various colors, durometer hardness, base materials and mounting thread!

- Please inquire or specify before ordering. [See our inquiry form!](#)

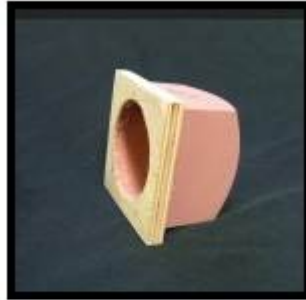
Copyright ©2014 - ACCUPAD INC.

AccuPad Inc. 1324 Harris Bridge Road, Anderson SC29621 USA, Phone: 864 964 0900, Fax: 864 964 0206, Email sales@accupad.com

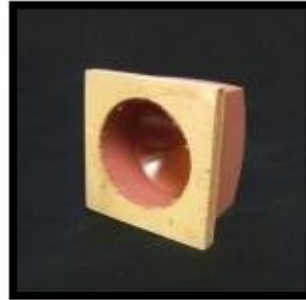
Custom Silicone Print Pads



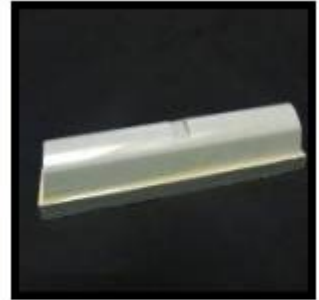
Custom 1



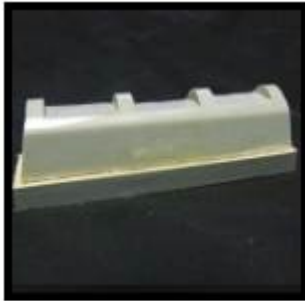
Custom 1a



Custom 1b



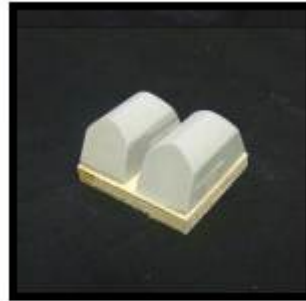
Custom 4



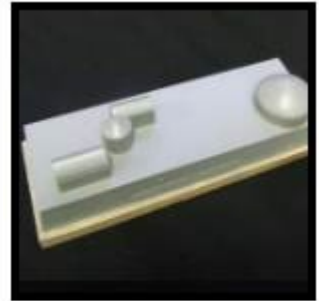
Custom 5



Custom 6



Custom 7



Custom 9



Custom 10



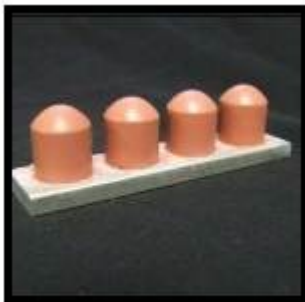
Custom 11



Custom 11a



Custom 12



Custom 13



Custom 14



Custom 15

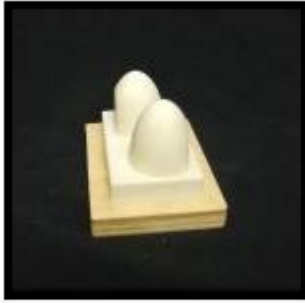


Custom 16a

Copyright ©2014 - ACCUPAD INC.

AccuPad Inc. 1324 Harris Bridge Road, Anderson SC29621 USA, Phone: 864 964 0900, Fax: 864 964 0206, Email sales@accupad.com

Custom Silicone Print Pads - continued



Custom 16



Custom 17



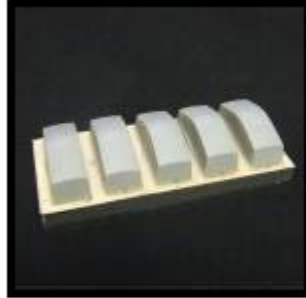
Custom 19



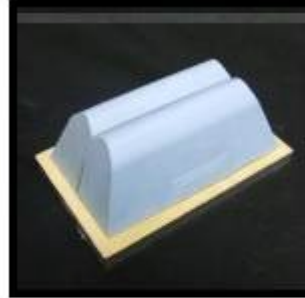
Custom 19



Custom 20



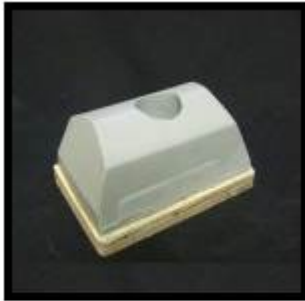
Custom 22



Custom 27



Custom 28



Custom 31



Custom 32



Custom 33



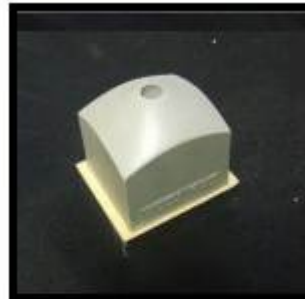
Custom 34



Custom 35



Custom 36



Custom 37



- All measurements are approximate and measured without base
- All print pads are available in various colors, durometer, base and mounting thread!

Copyright ©2014 - ACCUPAD INC.

AccuPad Inc. 1324 Harris Bridge Road, Anderson SC29621 USA, Phone: 864 964 0900, Fax: 864 964 0206, Email sales@accupad.com

Silicone Molded Products - Silicone Molds

Silicone Molds:

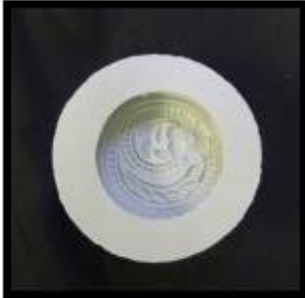
The molds displayed here are used for Soap and lotion bars



CM 1
Custom Mold



CM 2
Custom Mold



CM 3
Custom Mold



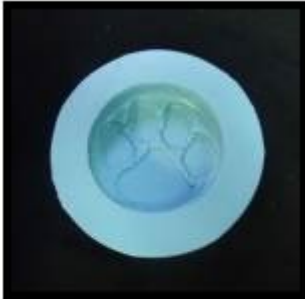
CM 4
Custom Mold



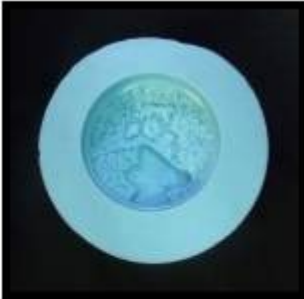
CM 5
Custom Mold



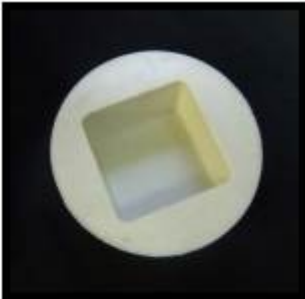
CM 6
Custom Mold



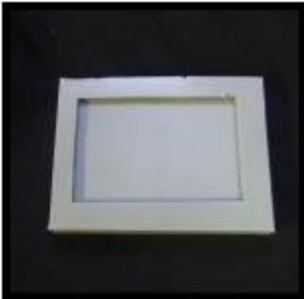
CM 7
Custom Mold



CM 8
Custom Mold



CM 9
Custom Mold



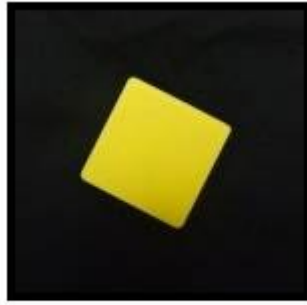
CM 10
Custom Mold

Silicone Blocks:

Applications: gauge / reference blocks for Durometer; vibration control,



Custom 8



Custom 8a

Workpiece Carriers:



Custom 3a



Custom 3

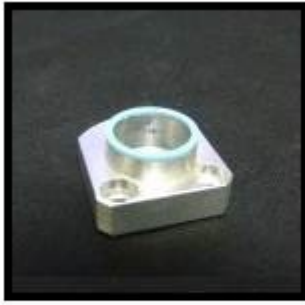


Custom 2

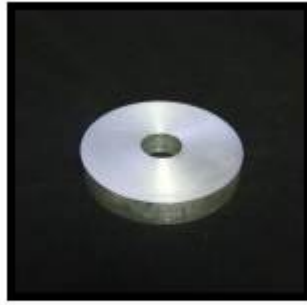


Custom 2a

Silicone Rings and Seals:



Custom 21



Custom 23



Custom 24



Custom 25



Custom 29

Various Silicone Molded Parts:



Custom 38



Custom 38a



Custom 26



Custom 30



- All measurements are approximate and measured without base
- All print pads are available in various colors, durometer hardness, base materials and mounting thread!

- Please inquire or specify before ordering. [See our inquiry form!](#)

Copyright ©2014 - ACCUPAD INC.

AccuPad Inc. 1324 Harris Bridge Road, Anderson SC29621 USA, Phone: 864 964 0900, Fax: 864 964 0206, Email sales@accupad.com

Silicone Embossing Pads

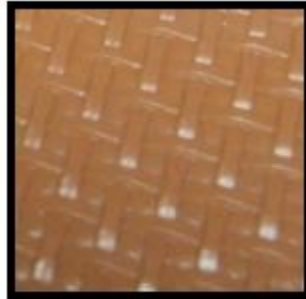
AccuPad is a major manufacturer of silicone embossing pads for the belting industry. We produce top end pads for Light Weight and Heavy Weight belt style to enhance the quality of the belt splice.

Shipping is available in 24 Hours to any location worldwide. All pads are custom made to meet your press specifications. In-house engineering is available for special projects.

Here our most requested patterns:



Basket Weave 8005



Basket Weave 8006



Basket Weave 8018



Basket Weave 8030



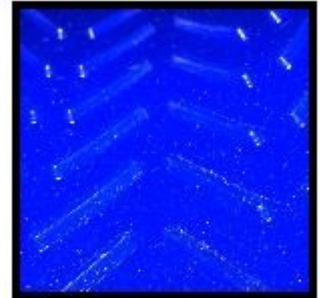
Basket Weave 8032



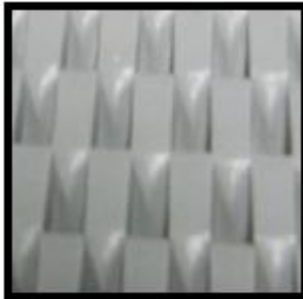
Basket Weave 8037



Basket Weave 8040



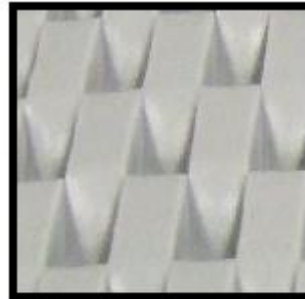
Chevron 1887



Chock Block 8012



Chock Block 8014



Chock Block 8028

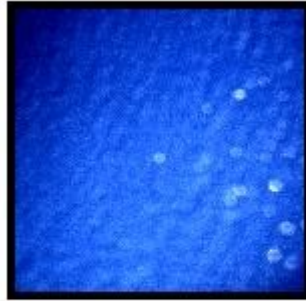


Chock Block 8031

Silicone Embossing Pads - continued



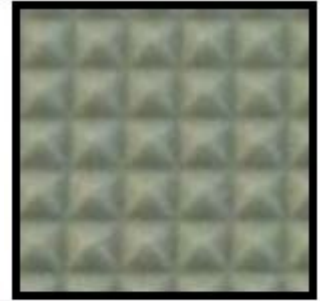
Crescent Top 1878



Fabric 1890



Fish Bone 1888



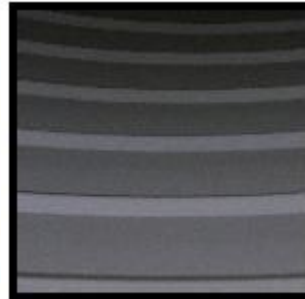
Inverted Pyramid



Longitudinal Rip
1885



Meat Cleat 1881



Meat Cleat 1889



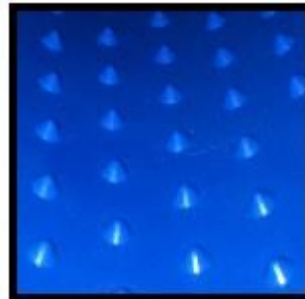
Meat Cleat 8009



Meat Cleat 8029



Meat Cleat wide
1883



Nipple Top 1886



Plus Sign 1879



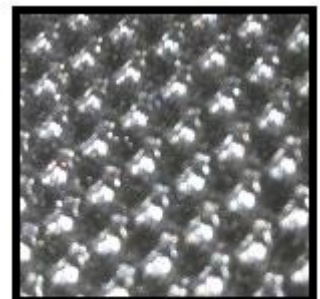
Rough Top 8007



Rough Top 8026

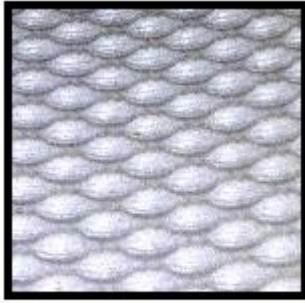


Rough Top 8038

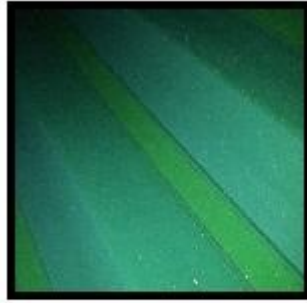


Snake Skin 1885

Silicone Embossing Pads - continued



Snake Skin 1891



Walnut 1882

Contact the Print Pad Specialists

Inquire about silicone print pads from AccuPad today. Contact us by

Mail: AccuPad Inc.
 1324 Harris Bridge Rd
 Anderson SC 29621

Phone: 864-964-0900
Fax: 864-964-0206

or

Email your inquiry using the form below:

Print Pad Inquiry Form (*) = required fields

Name*

Email* Company*

Phone Address

Fax City, State, ZIP

Product inquiring about? Catalog ID if applicable

Round Pads Cone Pad Square Pad Rectangular Roof Top Pad
 Print Blanket Print Roller Unique/Custom Pad Other Silicone Molded Product

Durometer Very Hard (85 - 95) Medium (60 - 75) Very Soft (35 - 50)
(All values for 00 scale) Hard (75 - 85) soft (50 - 60)

Pad Base Material Please select!

Marine Grade Ply Wood 1/4 thick 3/8 thick 1/2 thick 5/8 thick 3/4 thick

or Metal / Aluminum Nylon Composite tooled to specification

Please specify

Base Mounting Thread Please select!

1/4 3/8 6 mm

Instruction and Comments:

Copyright ©2014 - ACCUPAD INC.

AccuPad Inc. 1324 Harris Bridge Road, Anderson SC29621 USA, Phone: 864 964 0900, Fax: 864 964 0206, Email sales@accupad.com